

Datasheet for ABIN2460845
anti-KIF23 antibody



[Go to Product page](#)

1 Image

Overview

Quantity:	100 µL
Target:	KIF23
Reactivity:	Human, Mouse, Rat, Dog
Host:	Rabbit
Clonality:	Polyclonal
Conjugate:	This KIF23 antibody is un-conjugated
Application:	Western Blotting (WB), ELISA

Product Details

Immunogen:	Antibody produced in rabbits immunized with a synthetic peptide corresponding a region of human KIF23.
Purification:	Antibody is purified by peptide affinity chromatography method.

Target Details

Target:	KIF23
Alternative Name:	KIF23 (KIF23 Products)
Background:	KIF23 is a member of kinesin-like protein family. This family includes microtubule-dependent molecular motors that transport organelles within cells and move chromosomes during cell division. This protein has been shown to cross-bridge antiparallel microtubules and drive microtubule movement in vitro. Alternate splicing of this gene results in two transcript variants encoding two different isoforms.

Target Details

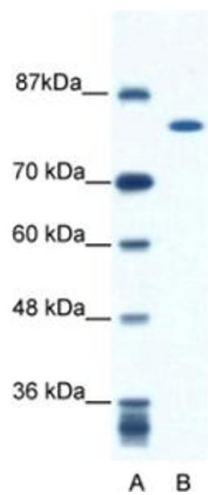
Molecular Weight:	98 kDa, 110 kDa
Gene ID:	9493
NCBI Accession:	NP_004847
UniProt:	Q02241

Application Details

Application Notes:	KIF23 antibody can be used for detection of KIF23 by ELISA at 1:312500. KIF23 antibody can be used for detection of KIF23 by western blot at 0.5 µg/mL, and HRP conjugated secondary antibody should be diluted 1:50,000 - 100,000.
Restrictions:	For Research Use only

Handling

Format:	Lyophilized
Reconstitution:	Add 50 µL of distilled water. Final antibody concentration is 1 mg/mL.
Concentration:	1 mg/mL
Buffer:	Antibody is lyophilized in PBS buffer with 2 % sucrose.
Handling Advice:	As with any antibody avoid repeat freeze-thaw cycles.
Storage:	4 °C/-20 °C
Storage Comment:	For short periods of storage (days) store at 4 °C. For longer periods of storage, store KIF23 antibody at -20 °C.



Western Blotting

Image 1.