

Datasheet for ABIN2460890

anti-MED17 antibody[Go to Product page](#)**1** Image

Overview

Quantity:	100 µL
Target:	MED17
Reactivity:	Human, Rat, Dog
Host:	Rabbit
Clonality:	Polyclonal
Conjugate:	This MED17 antibody is un-conjugated
Application:	Western Blotting (WB), ELISA, Immunohistochemistry (IHC)

Product Details

Immunogen:	Antibody produced in rabbits immunized with a synthetic peptide corresponding a region of human CRSP6.
Purification:	Antibody is purified by peptide affinity chromatography method.

Target Details

Target:	MED17
Alternative Name:	CRSP6 (MED17 Products)
Background:	The activation of gene transcription is a multistep process that is triggered by factors that recognize transcriptional enhancer sites in DNA. These factors work with co-activators to direct transcriptional initiation by the RNA polymerase II apparatus. The protein encoded by CRSP6 is a subunit of the CRSP (cofactor required for SP1 activation) complex, which, along with TFIID, is required for efficient activation by SP1. This protein is also a component of other multisubunit

Target Details

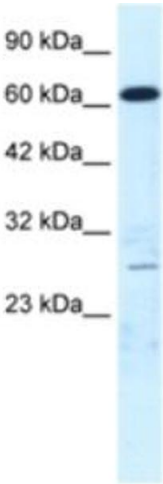
	complexes e.g. thyroid hormone receptor- (TR-) associated proteins which interact with TR and facilitate TR function on DNA templates in conjunction with initiation factors and cofactors.
Molecular Weight:	73 kDa
Gene ID:	9440
NCBI Accession:	NP_004259
UniProt:	Q9NVC6
Pathways:	Intracellular Steroid Hormone Receptor Signaling Pathway , Stem Cell Maintenance , Regulation of Lipid Metabolism by PPARalpha

Application Details

Application Notes:	CRSP6 antibody can be used for detection of CRSP6 by ELISA at 1:12500. CRSP6 antibody can be used for detection of CRSP6 by western blot at 0.5 µg/mL, and HRP conjugated secondary antibody should be diluted 1:50,000 - 100,000.
Restrictions:	For Research Use only

Handling

Format:	Lyophilized
Reconstitution:	Add 50 µL of distilled water. Final antibody concentration is 1 mg/mL.
Concentration:	1 mg/mL
Buffer:	Antibody is lyophilized in PBS buffer with 2 % sucrose.
Handling Advice:	As with any antibody avoid repeat freeze-thaw cycles.
Storage:	4 °C/-20 °C
Storage Comment:	For short periods of storage (days) store at 4 °C. For longer periods of storage, store CRSP6 antibody at -20 °C.



Western Blotting

Image 1.