



[Go to Product page](#)

Datasheet for ABIN2460898  
**anti-MAMLD1 antibody**

1 Image

### Overview

Quantity:	100 µL
Target:	MAMLD1
Reactivity:	Human
Host:	Rabbit
Clonality:	Polyclonal
Conjugate:	This MAMLD1 antibody is un-conjugated
Application:	Western Blotting (WB), ELISA

### Product Details

Immunogen:	Antibody produced in rabbits immunized with a synthetic peptide corresponding a region of human CXorf6.
Purification:	Antibody is purified by protein A chromatography method.

### Target Details

Target:	MAMLD1
Alternative Name:	CXorf6 ( <a href="#">MAMLD1 Products</a> )
Background:	CXorf6 is a protein predicted based on an ORF found in chromosome 14
Molecular Weight:	74 kDa
Gene ID:	10046
NCBI Accession:	<a href="#">NP_005482</a>

## Target Details

UniProt: [Q13495](#)

## Application Details

Application Notes: CXorf6 antibody can be used for detection of CXorf6 by ELISA at 1:1562500. CXorf6 antibody can be used for detection of CXorf6 by western blot at 1.25 µg/mL, and HRP conjugated secondary antibody should be diluted 1:50,000 - 100,000.

Restrictions: For Research Use only

## Handling

Format: Lyophilized

Reconstitution: Add 100 µL of distilled water. Final antibody concentration is 1 mg/mL.

Concentration: 1 mg/mL

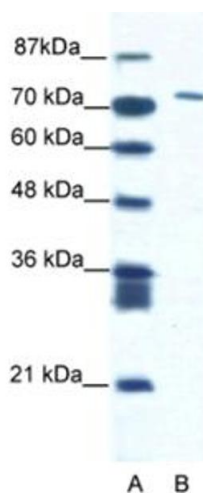
Buffer: Antibody is lyophilized in PBS buffer with 2 % sucrose.

Handling Advice: As with any antibody avoid repeat freeze-thaw cycles.

Storage: 4 °C/-20 °C

Storage Comment: For short periods of storage (days) store at 4 °C. For longer periods of storage, store CXorf6 antibody at -20 °C.

## Images



### Western Blotting

Image 1.