

Datasheet for ABIN2460977

**anti-LARP1B antibody**[Go to Product page](#)**1** Image

## Overview

Quantity:	100 µL
Target:	LARP1B
Reactivity:	Human, Rat, Dog
Host:	Rabbit
Clonality:	Polyclonal
Conjugate:	This LARP1B antibody is un-conjugated
Application:	ELISA, Western Blotting (WB), Immunohistochemistry (IHC)

## Product Details

Immunogen:	Antibody produced in rabbits immunized with a synthetic peptide corresponding a region of human LARP2.
Purification:	Antibody is purified by protein A chromatography method.

## Target Details

Target:	LARP1B
Alternative Name:	LARP2 ( <a href="#">LARP1B Products</a> )
Background:	LARP2 encodes a protein containing domains found in the La related protein of Drosophila melanogaster. La motif-containing proteins are thought to be RNA-binding proteins, where the La motif and adjacent amino acids fold into an RNA recognition motif. The La motif is also found in proteins unrelated to the La protein. Alternative splicing has been observed at this locus and three variants, encoding distinct isoforms, are described.

## Target Details

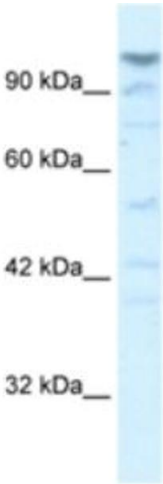
Molecular Weight:	116 kDa
Gene ID:	23367
NCBI Accession:	<a href="#">NP_056130</a>
UniProt:	<a href="#">Q6PKG0</a>

## Application Details

Application Notes:	LARP2 antibody can be used for detection of LARP2 by ELISA at 1:62500. LARP2 antibody can be used for detection of LARP2 by western blot at 5.0 µg/mL, and HRP conjugated secondary antibody should be diluted 1:50,000 - 100,000.
Restrictions:	For Research Use only

## Handling

Format:	Lyophilized
Reconstitution:	Add 100 µL of distilled water. Final antibody concentration is 1 mg/mL.
Concentration:	1 mg/mL
Buffer:	Antibody is lyophilized in PBS buffer with 2 % sucrose.
Handling Advice:	As with any antibody avoid repeat freeze-thaw cycles.
Storage:	4 °C/-20 °C
Storage Comment:	For short periods of storage (days) store at 4 °C. For longer periods of storage, store LARP2 antibody at -20 °C.



Western Blotting

Image 1.