

Datasheet for ABIN2461023  
**anti-MEIS2 antibody**



[Go to Product page](#)

1 Image

## Overview

Quantity:	100 µL
Target:	MEIS2
Reactivity:	Human, Mouse, Rat, Dog, Zebrafish (Danio rerio)
Host:	Rabbit
Clonality:	Polyclonal
Conjugate:	This MEIS2 antibody is un-conjugated
Application:	Western Blotting (WB), ELISA, Immunohistochemistry (IHC)

## Product Details

Immunogen:	Antibody produced in rabbits immunized with a synthetic peptide corresponding a region of human MEIS2.
Purification:	Antibody is purified by protein A chromatography method.

## Target Details

Target:	MEIS2
Alternative Name:	MEIS2 ( <a href="#">MEIS2 Products</a> )
Background:	MEIS2 encodes a homeobox protein belonging to the TALE ('three amino acid loop extension') family of homeodomain-containing proteins. TALE homeobox proteins are highly conserved transcription regulators, and several members have been shown to be essential contributors to developmental programs.
Molecular Weight:	52 kDa

## Target Details

Gene ID:	4212
NCBI Accession:	<a href="#">NP_733775</a>
UniProt:	<a href="#">O14770</a>

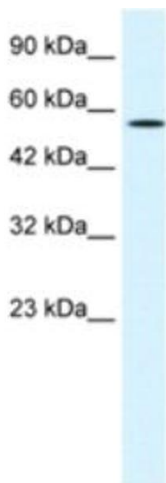
## Application Details

Application Notes:	MEIS2 antibody can be used for detection of MEIS2 by ELISA at 1:312500. MEIS2 antibody can be used for detection of MEIS2 by western blot at 1.25 µg/mL, and HRP conjugated secondary antibody should be diluted 1:50,000 - 100,000.
Restrictions:	For Research Use only

## Handling

Format:	Lyophilized
Reconstitution:	Add 100 µL of distilled water. Final antibody concentration is 1 mg/mL.
Concentration:	1 mg/mL
Buffer:	Antibody is lyophilized in PBS buffer with 2 % sucrose.
Handling Advice:	As with any antibody avoid repeat freeze-thaw cycles.
Storage:	4 °C/-20 °C
Storage Comment:	For short periods of storage (days) store at 4 °C. For longer periods of storage, store MEIS2 antibody at -20 °C.

## Images



### Western Blotting

Image 1.