

Datasheet for ABIN2461029

anti-LRRC14 antibody[Go to Product page](#)**1** Image

Overview

Quantity:	100 µL
Target:	LRRC14
Reactivity:	Human
Host:	Rabbit
Clonality:	Polyclonal
Conjugate:	This LRRC14 antibody is un-conjugated
Application:	Western Blotting (WB), ELISA

Product Details

Immunogen:	Antibody produced in rabbits immunized with a synthetic peptide corresponding a region of human LRRC14.
Purification:	Antibody is purified by peptide affinity chromatography method.

Target Details

Target:	LRRC14
Alternative Name:	LRRC14 (LRRC14 Products)
Background:	LRRC14 belongs to the PRAME family and contains 6 LRR (leucine-rich) repeats
Molecular Weight:	55 kDa
Gene ID:	9684
NCBI Accession:	NP_055480

Target Details

UniProt: [Q15048](#)

Application Details

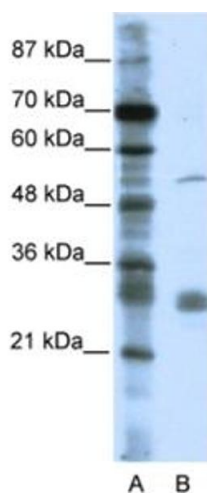
Application Notes: LRRC14 antibody can be used for detection of LRRC14 by ELISA at 1:62500. LRRC14 antibody can be used for detection of LRRC14 by western blot at 0.25 µg/mL, and HRP conjugated secondary antibody should be diluted 1:50,000 - 100,000.

Restrictions: For Research Use only

Handling

Format:	Lyophilized
Reconstitution:	Add 50 µL of distilled water. Final antibody concentration is 1 mg/mL.
Concentration:	1 mg/mL
Buffer:	Antibody is lyophilized in PBS buffer with 2 % sucrose.
Handling Advice:	As with any antibody avoid repeat freeze-thaw cycles.
Storage:	4 °C/-20 °C
Storage Comment:	For short periods of storage (days) store at 4 °C. For longer periods of storage, store LRRC14 antibody at -20 °C.

Images



Western Blotting

Image 1.