



[Go to Product page](#)

Datasheet for ABIN2461041

anti-BTBD3 antibody

1 Image

Overview

Quantity:	100 µL
Target:	BTBD3
Reactivity:	Human, Dog
Host:	Rabbit
Clonality:	Polyclonal
Conjugate:	This BTBD3 antibody is un-conjugated
Application:	Western Blotting (WB), ELISA

Product Details

Immunogen:	Antibody produced in rabbits immunized with a synthetic peptide corresponding a region of human BTBD3.
Purification:	Antibody is purified by protein A chromatography method.

Target Details

Target:	BTBD3
Alternative Name:	BTBD3 (BTBD3 Products)
Background:	BTBD3 is a protein containing BTB/POZ domain. Its function has not been determined yet.
Molecular Weight:	58 kDa, 52 kDa
Gene ID:	22903
NCBI Accession:	NP_055777

Target Details

UniProt: [Q9Y2F9](#)

Application Details

Application Notes: BTBD3 antibody can be used for detection of BTBD3 by ELISA at 1:62500. BTBD3 antibody can be used for detection of BTBD3 by western blot at 2.5 µg/mL, and HRP conjugated secondary antibody should be diluted 1:50,000 - 100,000.

Restrictions: For Research Use only

Handling

Format: Lyophilized

Reconstitution: Add 100 µL of distilled water. Final antibody concentration is 1 mg/mL.

Concentration: 1 mg/mL

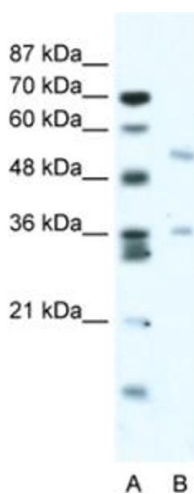
Buffer: Antibody is lyophilized in PBS buffer with 2 % sucrose.

Handling Advice: As with any antibody avoid repeat freeze-thaw cycles.

Storage: 4 °C/-20 °C

Storage Comment: For short periods of storage (days) store at 4 °C. For longer periods of storage, store BTBD3 antibody at -20 °C.

Images



Western Blotting

Image 1.