

Datasheet for ABIN2461101
anti-P2RX1 antibody



[Go to Product page](#)

1 Image

Overview

Quantity:	100 µL
Target:	P2RX1
Reactivity:	Human, Dog
Host:	Rabbit
Clonality:	Polyclonal
Conjugate:	This P2RX1 antibody is un-conjugated
Application:	Western Blotting (WB), ELISA, Immunohistochemistry (IHC)

Product Details

Immunogen:	Antibody produced in rabbits immunized with a synthetic peptide corresponding a region of human P2RX1.
Purification:	Antibody is purified by protein A chromatography method.

Target Details

Target:	P2RX1
Alternative Name:	P2RX1 (P2RX1 Products)
Background:	P2RX1 belongs to the family of purinoceptors for ATP. This receptor functions as a ligand-gated ion channel with relatively high calcium permeability. Binding to ATP mediates synaptic transmission between neurons and from neurons to smooth muscle, being responsible, for example, for sympathetic vasoconstriction in small arteries, arterioles and vas deferens. Mouse studies suggest that this receptor is essential for normal male reproductive function. It is

Target Details

possible that the development of selective antagonists for this receptor may provide an effective non-hormonal male contraceptive pill. The product of this gene belongs to the family of purinoceptors for ATP. This receptor functions as a ligand-gated ion channel with relatively high calcium permeability. Binding to ATP mediates synaptic transmission between neurons and from neurons to smooth muscle, being responsible, for example, for sympathetic vasoconstriction in small arteries, arterioles and vas deferens. Mouse studies suggest that this receptor is essential for normal male reproductive function. It is possible that the development of selective antagonists for this receptor may provide an effective non-hormonal male contraceptive pill.

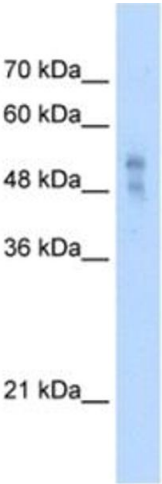
Molecular Weight:	45 kDa
Gene ID:	5023
NCBI Accession:	NP_002549
UniProt:	P51575
Pathways:	Positive Regulation of Endopeptidase Activity

Application Details

Application Notes:	P2RX1 antibody can be used for detection of P2RX1 by ELISA at 1:312500. P2RX1 antibody can be used for detection of P2RX1 by western blot at 2.5 µg/mL, and HRP conjugated secondary antibody should be diluted 1:50,000 - 100,000.
Restrictions:	For Research Use only

Handling

Format:	Lyophilized
Reconstitution:	Add 50 µL of distilled water. Final antibody concentration is 1 mg/mL.
Concentration:	1 mg/mL
Buffer:	Antibody is lyophilized in PBS buffer with 2 % sucrose.
Handling Advice:	As with any antibody avoid repeat freeze-thaw cycles.
Storage:	4 °C/-20 °C
Storage Comment:	For short periods of storage (days) store at 4 °C. For longer periods of storage, store P2RX1 antibody at -20 °C.



Western Blotting

Image 1.