

Datasheet for ABIN2461138

anti-KCTD10 antibody[Go to Product page](#)**1** Image

Overview

Quantity:	100 µL
Target:	KCTD10
Reactivity:	Human, Dog
Host:	Rabbit
Clonality:	Polyclonal
Conjugate:	This KCTD10 antibody is un-conjugated
Application:	Western Blotting (WB), ELISA

Product Details

Immunogen:	Antibody produced in rabbits immunized with a synthetic peptide corresponding a region of human KCTD10.
Purification:	Antibody is purified by protein A chromatography method.

Target Details

Target:	KCTD10
Alternative Name:	KCTD10 (KCTD10 Products)
Background:	KCTD10, a rat potassium channel tetramerisation domain-containing 10 gene is a novel member of the polymerase delta-interacting protein 1 (PDIP1) gene family. KCTD10 shares significant similarity in amino acid sequence to PDIP1 and can interact with the small subunit of DNA polymerase delta and PCNA as PDIP1 does. Like PDIP1, the expression of KCTD10 gene can be induced by TNF-alpha in NIH3T3 cells.

Target Details

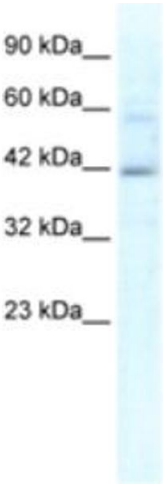
Molecular Weight:	34 kDa
Gene ID:	83892
NCBI Accession:	NP_114160
UniProt:	Q9H3F6

Application Details

Application Notes:	KCTD10 antibody can be used for detection of KCTD10 by ELISA at 1:312500. KCTD10 antibody can be used for detection of KCTD10 by western blot at 1.25 µg/mL, and HRP conjugated secondary antibody should be diluted 1:50,000 - 100,000.
Restrictions:	For Research Use only

Handling

Format:	Lyophilized
Reconstitution:	Add 100 µL of distilled water. Final antibody concentration is 1 mg/mL.
Concentration:	1 mg/mL
Buffer:	Antibody is lyophilized in PBS buffer with 2 % sucrose.
Handling Advice:	As with any antibody avoid repeat freeze-thaw cycles.
Storage:	4 °C/-20 °C
Storage Comment:	For short periods of storage (days) store at 4 °C. For longer periods of storage, store KCTD10 antibody at -20 °C.



Western Blotting

Image 1.