

Datasheet for ABIN2461141
anti-CHRFAM7A antibody[Go to Product page](#)

1 Image

Overview

Quantity:	100 µL
Target:	CHRFAM7A
Reactivity:	Human, Mouse, Rat, Dog, Zebrafish (Danio rerio)
Host:	Rabbit
Clonality:	Polyclonal
Conjugate:	This CHRFAM7A antibody is un-conjugated
Application:	Western Blotting (WB), ELISA

Product Details

Immunogen:	Antibody produced in rabbits immunized with a synthetic peptide corresponding a region of human CHRFAM7A.
Purification:	Antibody is purified by peptide affinity chromatography method.

Target Details

Target:	CHRFAM7A
Alternative Name:	CHRFAM7A (CHRFAM7A Products)
Background:	The nicotinic acetylcholine receptors (nAChRs) are members of a superfamily of ligand-gated ion channels that mediate fast signal transmission at synapses. The family member CHRNA7 is located on chromosome 15 in a region associated with several neuropsychiatric disorders. CHRFAM7A is a hybrid between CHRNA7 and FAM7A.
Molecular Weight:	45 kDa, 56 kDa

Target Details

Gene ID:	89832
NCBI Accession:	NP_647536
UniProt:	Q494W8

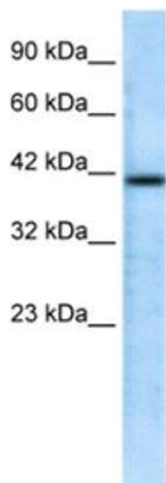
Application Details

Application Notes:	CHRFAM7A antibody can be used for detection of CHRFAM7A by ELISA at 1:62500. CHRFAM7A antibody can be used for detection of CHRFAM7A by western blot at 0.5 µg/mL, and HRP conjugated secondary antibody should be diluted 1:50,000 - 100,000.
Restrictions:	For Research Use only

Handling

Format:	Lyophilized
Reconstitution:	Add 50 µL of distilled water. Final antibody concentration is 1 mg/mL.
Concentration:	1 mg/mL
Buffer:	Antibody is lyophilized in PBS buffer with 2 % sucrose.
Handling Advice:	As with any antibody avoid repeat freeze-thaw cycles.
Storage:	4 °C/-20 °C
Storage Comment:	For short periods of storage (days) store at 4 °C. For longer periods of storage, store CHRFAM7A antibody at -20 °C.

Images



Western Blotting

Image 1.