



[Go to Product page](#)

Datasheet for ABIN2461237

anti-ZNF432 antibody

1 Image

Overview

Quantity:	100 µL
Target:	ZNF432
Reactivity:	Human
Host:	Rabbit
Clonality:	Polyclonal
Conjugate:	This ZNF432 antibody is un-conjugated
Application:	ELISA, Western Blotting (WB)

Product Details

Immunogen:	Antibody produced in rabbits immunized with a synthetic peptide corresponding a region of human ZNF432.
Purification:	Antibody is purified by peptide affinity chromatography method.

Target Details

Target:	ZNF432
Alternative Name:	ZNF432 (ZNF432 Products)
Background:	ZNF432 belongs to the krueppel C2H2-type zinc-finger protein family. It contains 16 C2H2-type zinc fingers and 1 KRAB domain. ZNF432 may be involved in transcriptional regulation.
Molecular Weight:	75 kDa
Gene ID:	9668

Target Details

NCBI Accession: [NP_055465](#)

UniProt: [O94892](#)

Application Details

Application Notes: ZNF432 antibody can be used for detection of ZNF432 by ELISA at 1:312500. ZNF432 antibody can be used for detection of ZNF432 by western blot at 0.5 µg/mL, and HRP conjugated secondary antibody should be diluted 1:50,000 - 100,000.

Restrictions: For Research Use only

Handling

Format: Lyophilized

Reconstitution: Add 50 µL of distilled water. Final antibody concentration is 1 mg/mL.

Concentration: 1 mg/mL

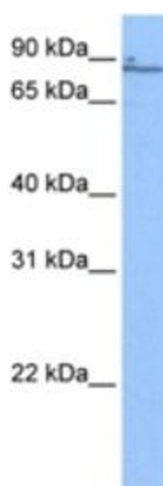
Buffer: Antibody is lyophilized in PBS buffer with 2 % sucrose.

Handling Advice: As with any antibody avoid repeat freeze-thaw cycles.

Storage: 4 °C/-20 °C

Storage Comment: For short periods of storage (days) store at 4 °C. For longer periods of storage, store ZNF432 antibody at -20 °C.

Images



Western Blotting

Image 1.