

Datasheet for ABIN2461249

**anti-ZNF358 antibody**[Go to Product page](#)**1** Image

## Overview

Quantity:	100 µL
Target:	ZNF358
Reactivity:	Human
Host:	Rabbit
Clonality:	Polyclonal
Conjugate:	This ZNF358 antibody is un-conjugated
Application:	Western Blotting (WB), ELISA, Immunohistochemistry (IHC)

## Product Details

Immunogen:	Antibody produced in rabbits immunized with a synthetic peptide corresponding a region of human ZNF358.
Purification:	Antibody is purified by protein A chromatography method.

## Target Details

Target:	ZNF358
Alternative Name:	ZNF358 ( <a href="#">ZNF358 Products</a> )
Background:	ZNF358, a gene located on chromosome 19, encodes a protein involved in embryogenesis.
Molecular Weight:	50 kDa
Gene ID:	140467
NCBI Accession:	<a href="#">NP_060553</a>

## Target Details

UniProt:	Q9NW07
Pathways:	Stem Cell Maintenance

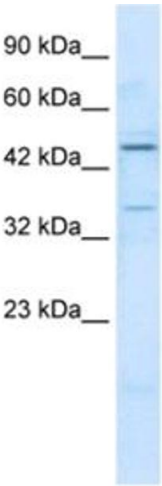
## Application Details

Application Notes:	ZNF358 antibody can be used for detection of ZNF358 by ELISA at 1:312500. ZNF358 antibody can be used for detection of ZNF358 by western blot at 1.25 µg/mL, and HRP conjugated secondary antibody should be diluted 1:50,000 - 100,000.
Restrictions:	For Research Use only

## Handling

Format:	Lyophilized
Reconstitution:	Add 100 µL of distilled water. Final antibody concentration is 1 mg/mL.
Concentration:	1 mg/mL
Buffer:	Antibody is lyophilized in PBS buffer with 2 % sucrose.
Handling Advice:	As with any antibody avoid repeat freeze-thaw cycles.
Storage:	4 °C/-20 °C
Storage Comment:	For short periods of storage (days) store at 4 °C. For longer periods of storage, store ZNF358 antibody at -20 °C.

## Images



### Western Blotting

Image 1.