



[Go to Product page](#)

Datasheet for ABIN2461254

anti-LHX9 antibody

1 Image

Overview

Quantity:	100 µL
Target:	LHX9
Reactivity:	Human, Rat, Dog
Host:	Rabbit
Clonality:	Polyclonal
Conjugate:	This LHX9 antibody is un-conjugated
Application:	Western Blotting (WB), ELISA, Immunohistochemistry (IHC)

Product Details

Immunogen:	Antibody produced in rabbits immunized with a synthetic peptide corresponding a region of human LHX9.
Purification:	Antibody is purified by protein A chromatography method.

Target Details

Target:	LHX9
Alternative Name:	LHX9 (LHX9 Products)
Background:	LHX9 encodes a member of the LIM homeobox gene family of developmentally expressed transcription factors. The encoded protein contains a homeodomain and two cysteine-rich zinc-binding LIM domains involved in protein-protein interactions. The protein is highly similar to a mouse protein that causes gonadal agenesis when inactivated, suggesting a role in gonadal development.

Target Details

Molecular Weight: 44 kDa, 43 kDa

Gene ID: 56956

NCBI Accession: [NP_064589](#)

UniProt: [Q86UH2](#)

Application Details

Application Notes: LHX9 antibody can be used for detection of LHX9 by ELISA at 1:312500. LHX9 antibody can be used for detection of LHX9 by western blot at 1.25 µg/mL, and HRP conjugated secondary antibody should be diluted 1:50,000 - 100,000.

Restrictions: For Research Use only

Handling

Format: Lyophilized

Reconstitution: Add 100 µL of distilled water. Final antibody concentration is 1 mg/mL.

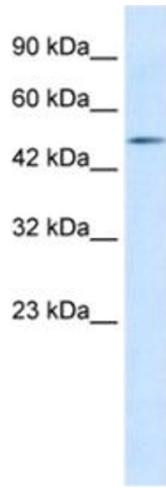
Concentration: 1 mg/mL

Buffer: Antibody is lyophilized in PBS buffer with 2 % sucrose.

Handling Advice: As with any antibody avoid repeat freeze-thaw cycles.

Storage: 4 °C/-20 °C

Storage Comment: For short periods of storage (days) store at 4 °C. For longer periods of storage, store LHX9 antibody at -20 °C.



Western Blotting

Image 1.