



[Go to Product page](#)

Datasheet for ABIN2461283

anti-RAX2 antibody

1 Image

Overview

Quantity:	100 µL
Target:	RAX2
Reactivity:	Human
Host:	Rabbit
Clonality:	Polyclonal
Conjugate:	This RAX2 antibody is un-conjugated
Application:	Western Blotting (WB), ELISA

Product Details

Immunogen:	Antibody produced in rabbits immunized with a synthetic peptide corresponding a region of human RAXL1.
Purification:	Antibody is purified by protein A chromatography method.

Target Details

Target:	RAX2
Alternative Name:	RAXL1 (RAX2 Products)
Background:	RAXL1 is a hypothetical protein
Molecular Weight:	20 kDa
Gene ID:	84839
NCBI Accession:	NP_116142

Target Details

UniProt: [Q96IS3](#)

Application Details

Application Notes: RAXL1 antibody can be used for detection of RAXL1 by ELISA at 1:312500. RAXL1 antibody can be used for detection of RAXL1 by western blot at 1.25 µg/mL, and HRP conjugated secondary antibody should be diluted 1:50,000 - 100,000.

Restrictions: For Research Use only

Handling

Format: Lyophilized

Reconstitution: Add 100 µL of distilled water. Final antibody concentration is 1 mg/mL.

Concentration: 1 mg/mL

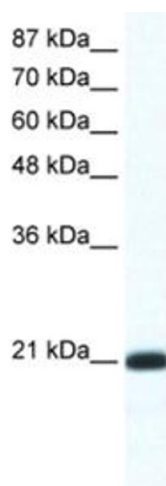
Buffer: Antibody is lyophilized in PBS buffer with 2 % sucrose.

Handling Advice: As with any antibody avoid repeat freeze-thaw cycles.

Storage: 4 °C/-20 °C

Storage Comment: For short periods of storage (days) store at 4 °C. For longer periods of storage, store RAXL1 antibody at -20 °C.

Images



Western Blotting

Image 1.