

Datasheet for ABIN2461288

**anti-ZNF670 antibody**[Go to Product page](#)**1** Image

## Overview

Quantity:	100 µL
Target:	ZNF670
Reactivity:	Human
Host:	Rabbit
Clonality:	Polyclonal
Conjugate:	This ZNF670 antibody is un-conjugated
Application:	ELISA, Western Blotting (WB)

## Product Details

Immunogen:	Antibody produced in rabbits immunized with a synthetic peptide corresponding a region of human ZNF670.
Purification:	Antibody is purified by protein A chromatography method.

## Target Details

Target:	ZNF670
Alternative Name:	ZNF670 ( <a href="#">ZNF670 Products</a> )
Background:	This gene, ZNF670, which is located on chromosome 1, is predicted to encode a zinc finger protein, currently with unknown function.
Molecular Weight:	45 kDa
Gene ID:	93474

## Target Details

NCBI Accession: [NP\\_149990](#)

UniProt: [Q9BS34](#)

## Application Details

Application Notes: ZNF670 antibody can be used for detection of ZNF670 by ELISA at 1:312500. ZNF670 antibody can be used for detection of ZNF670 by western blot at 1.25 µg/mL, and HRP conjugated secondary antibody should be diluted 1:50,000 - 100,000.

Restrictions: For Research Use only

## Handling

Format: Lyophilized

Reconstitution: Add 100 µL of distilled water. Final antibody concentration is 1 mg/mL.

Concentration: 1 mg/mL

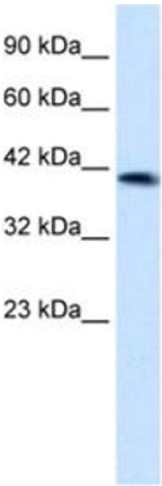
Buffer: Antibody is lyophilized in PBS buffer with 2 % sucrose.

Handling Advice: As with any antibody avoid repeat freeze-thaw cycles.

Storage: 4 °C/-20 °C

Storage Comment: For short periods of storage (days) store at 4 °C. For longer periods of storage, store ZNF670 antibody at -20 °C.

## Images



### Western Blotting

Image 1.