

Datasheet for ABIN2461320
anti-HMG1L10 antibody[Go to Product page](#)

1 Image

Overview

Quantity:	100 µL
Target:	HMG1L10
Reactivity:	Human, Dog, Mouse, Rat
Host:	Rabbit
Clonality:	Polyclonal
Conjugate:	This HMG1L10 antibody is un-conjugated
Application:	Western Blotting (WB), ELISA

Product Details

Immunogen:	Antibody produced in rabbits immunized with a synthetic peptide corresponding a region of human HMG1L10.
Purification:	Antibody is purified by protein A chromatography method.

Target Details

Target:	HMG1L10
Alternative Name:	HMG1L10 (HMG1L10 Products)
Background:	HMG1L10 contains 2 HMG box DNA-binding domains and belongs to the HMGB family. It binds preferentially single-stranded DNA and unwinds double stranded DNA.
Molecular Weight:	23 kDa, 25 kDa
Gene ID:	27126

Target Details

UniProt: [Q9UGV6](#)

Application Details

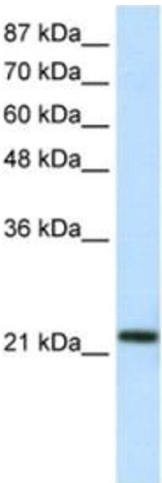
Application Notes: HMG1L10 antibody can be used for detection of HMG1L10 by ELISA at 1:62500. HMG1L10 antibody can be used for detection of HMG1L10 by western blot at 1.25 µg/mL, and HRP conjugated secondary antibody should be diluted 1:50,000 - 100,000.

Restrictions: For Research Use only

Handling

Format:	Lyophilized
Reconstitution:	Add 100 µL of distilled water. Final antibody concentration is 1 mg/mL.
Concentration:	1 mg/mL
Buffer:	Antibody is lyophilized in PBS buffer with 2 % sucrose.
Handling Advice:	As with any antibody avoid repeat freeze-thaw cycles.
Storage:	4 °C/-20 °C
Storage Comment:	For short periods of storage (days) store at 4 °C. For longer periods of storage, store HMG1L10 antibody at -20 °C.

Images



Western Blotting

Image 1.