

Datasheet for ABIN2461342

**anti-BAT1 antibody**[Go to Product page](#)**1** Image

## Overview

Quantity:	100 µL
Target:	BAT1 (DDX39)
Reactivity:	Human, Rat, Dog, Mouse
Host:	Rabbit
Clonality:	Polyclonal
Conjugate:	This BAT1 antibody is un-conjugated
Application:	Western Blotting (WB), ELISA

## Product Details

Immunogen:	Antibody produced in rabbits immunized with a synthetic peptide corresponding a region of human BAT1.
Purification:	Antibody is purified by peptide affinity chromatography method.

## Target Details

Target:	BAT1 (DDX39)
Alternative Name:	BAT1 ( <a href="#">DDX39 Products</a> )
Background:	BAT1 is a member of the DEAD protein family of ATP-dependent RNA helicases. Members of this family are involved in a number of cellular functions including initiation of translation, RNA splicing, and ribosome assembly. A cluster of genes, BAT1-BAT5, has been localized in the vicinity of the genes for TNF alpha and TNF beta. These genes are all within the human major histocompatibility complex class III region. This protein is a negative regulator of inflammation.

## Target Details

It is also thought to be a translation initiation factor. This gene is a strong candidate gene for rheumatoid arthritis. There are multiple alternatively spliced transcript variants known for this gene but only two have been fully described. Both of these variants encode the same isoform. This gene has been found to have multiple polyadenylation sites.

Molecular Weight: 47 kDa, 49 kDa, 49 kDa

Gene ID: 7919

NCBI Accession: [NP\\_542165](#)

UniProt: [Q13838](#)

Pathways: [Ribonucleoprotein Complex Subunit Organization](#)

## Application Details

Application Notes: BAT1 antibody can be used for detection of BAT1 by ELISA at 1:12500. BAT1 antibody can be used for detection of BAT1 by western blot at 0.5 µg/mL, and HRP conjugated secondary antibody should be diluted 1:50,000 - 100,000.

Restrictions: For Research Use only

## Handling

Format: Lyophilized

Reconstitution: Add 50 µL of distilled water. Final antibody concentration is 1 mg/mL.

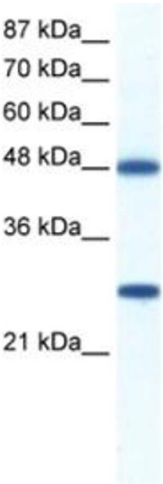
Concentration: 1 mg/mL

Buffer: Antibody is lyophilized in PBS buffer with 2 % sucrose.

Handling Advice: As with any antibody avoid repeat freeze-thaw cycles.

Storage: 4 °C/-20 °C

Storage Comment: For short periods of storage (days) store at 4 °C. For longer periods of storage, store BAT1 antibody at -20 °C.



Western Blotting

Image 1.