

Datasheet for ABIN2461361

**anti-DDX50 antibody**[Go to Product page](#)**1** Image

## Overview

Quantity:	100 µL
Target:	DDX50
Reactivity:	Human, Dog
Host:	Rabbit
Clonality:	Polyclonal
Conjugate:	This DDX50 antibody is un-conjugated
Application:	Western Blotting (WB), ELISA

## Product Details

Immunogen:	Antibody produced in rabbits immunized with a synthetic peptide corresponding a region of human DDX50.
Purification:	Antibody is purified by protein A chromatography method.

## Target Details

Target:	DDX50
Alternative Name:	DDX50 ( <a href="#">DDX50 Products</a> )
Background:	DEAD box proteins, characterized by the conserved motif Asp-Glu-Ala-Asp (DEAD), are putative RNA helicases. They are implicated in a number of cellular processes involving alteration of RNA secondary structure such as translation initiation, nuclear and mitochondrial splicing, and ribosome and spliceosome assembly. Based on their distribution patterns, some members of this DEAD box protein family are believed to be involved in embryogenesis, spermatogenesis,

## Target Details

and cellular growth and division. DDX50 is a DEAD box enzyme that may be involved in ribosomal RNA synthesis or processing. DDX50 and DDX21, also called RH-II/GuA, have similar genomic structures and are in tandem orientation on chromosome 10, suggesting that the two genes arose by gene duplication in evolution. DDX50 gene has pseudogenes on chromosomes 2, 3 and 4. Alternative splicing of this gene generates multiple transcript variants, but the full length nature of all the other variants but one has not been defined.

Molecular Weight: 81 kDa

Gene ID: 79009

NCBI Accession: [NP\\_076950](#)

UniProt: [Q9BQ39](#)

## Application Details

Application Notes: DDX50 antibody can be used for detection of DDX50 by ELISA at 1:62500. DDX50 antibody can be used for detection of DDX50 by western blot at 2.5 µg/mL, and HRP conjugated secondary antibody should be diluted 1:50,000 - 100,000.

Restrictions: For Research Use only

## Handling

Format: Lyophilized

Reconstitution: Add 100 µL of distilled water. Final antibody concentration is 1 mg/mL.

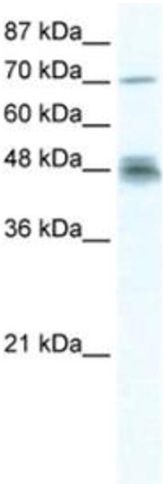
Concentration: 1 mg/mL

Buffer: Antibody is lyophilized in PBS buffer with 2 % sucrose.

Handling Advice: As with any antibody avoid repeat freeze-thaw cycles.

Storage: 4 °C/-20 °C

Storage Comment: For short periods of storage (days) store at 4 °C. For longer periods of storage, store DDX50 antibody at -20 °C.



Western Blotting

Image 1.