

Datasheet for ABIN2461383
anti-GJB1 antibody



[Go to Product page](#)

1 Image

Overview

Quantity:	100 µL
Target:	GJB1
Reactivity:	Human, Rat, Mouse, Dog
Host:	Rabbit
Clonality:	Polyclonal
Conjugate:	This GJB1 antibody is un-conjugated
Application:	Western Blotting (WB), Immunohistochemistry (IHC), ELISA

Product Details

Immunogen:	Antibody produced in rabbits immunized with a synthetic peptide corresponding a region of human GJB1.
Purification:	Antibody is purified by protein A chromatography method.

Target Details

Target:	GJB1
Alternative Name:	GJB1 (GJB1 Products)
Background:	This gene encodes for a Connexin 32 protein. A large Charcot-Marie-Tooth disease family has been identified with a novel mutation in the Cx32 P2 promoter region at position -526bp. Cx32 mutants that are associated with a CNS phenotype may have toxic effects in oligodendrocytes.
Molecular Weight:	31 kDa
Gene ID:	2705

Target Details

NCBI Accession:	NP_000157
UniProt:	P08034
Pathways:	Cell-Cell Junction Organization

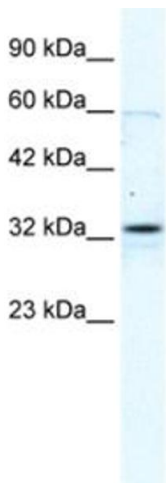
Application Details

Application Notes:	GJB1 antibody can be used for detection of GJB1 by ELISA at 1:312500. GJB1 antibody can be used for detection of GJB1 by western blot at 2.5 µg/mL, and HRP conjugated secondary antibody should be diluted 1:50,000 - 100,000.
Restrictions:	For Research Use only

Handling

Format:	Lyophilized
Reconstitution:	Add 100 µL of distilled water. Final antibody concentration is 1 mg/mL.
Concentration:	1 mg/mL
Buffer:	Antibody is lyophilized in PBS buffer with 2 % sucrose.
Handling Advice:	As with any antibody avoid repeat freeze-thaw cycles.
Storage:	4 °C/-20 °C
Storage Comment:	For short periods of storage (days) store at 4 °C. For longer periods of storage, store GJB1 antibody at -20 °C.

Images



Western Blotting

Image 1.