

Datasheet for ABIN2461445

anti-Mesp2 antibody[Go to Product page](#)**1** Image

Overview

Quantity:	100 µL
Target:	Mesp2
Reactivity:	Mouse
Host:	Rabbit
Clonality:	Polyclonal
Conjugate:	This Mesp2 antibody is un-conjugated
Application:	ELISA, Western Blotting (WB)

Product Details

Immunogen:	Antibody produced in rabbits immunized with a synthetic peptide corresponding a region of human MESP2.
Purification:	Antibody is purified by protein A chromatography method.

Target Details

Target:	Mesp2
Alternative Name:	MESP2 (Mesp2 Products)
Background:	Somite boundaries formed during embryogenesis, at the interface between Notch1-activated and -repressed domains. Genetic and biochemical studies indicate that this interface is generated by suppression of Notch activity by mesoderm posterior 2 (Mesp2) through induction of the lunatic fringe gene (Lfng). It is proposed that the oscillation of Notch activity is arrested and translated in the wavefront by Mesp2.

Target Details

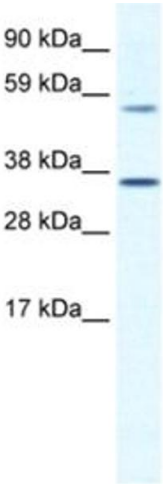
Molecular Weight:	41 kDa
Gene ID:	17293
NCBI Accession:	NP_032615
UniProt:	O08574

Application Details

Application Notes:	MESP2 antibody can be used for detection of MESP2 by ELISA at 1:62500. MESP2 antibody can be used for detection of MESP2 by western blot at 1.25 µg/mL, and HRP conjugated secondary antibody should be diluted 1:50,000 - 100,000.
Restrictions:	For Research Use only

Handling

Format:	Lyophilized
Reconstitution:	Add 100 µL of distilled water. Final antibody concentration is 1 mg/mL.
Concentration:	1 mg/mL
Buffer:	Antibody is lyophilized in PBS buffer with 2 % sucrose.
Handling Advice:	As with any antibody avoid repeat freeze-thaw cycles.
Storage:	4 °C/-20 °C
Storage Comment:	For short periods of storage (days) store at 4 °C. For longer periods of storage, store MESP2 antibody at -20 °C.



Western Blotting

Image 1.