

Datasheet for ABIN2461510

anti-Use1 antibody[Go to Product page](#)**1** Image

Overview

Quantity:	100 µL
Target:	Use1
Reactivity:	Mouse
Host:	Rabbit
Clonality:	Polyclonal
Conjugate:	This Use1 antibody is un-conjugated
Application:	Western Blotting (WB), ELISA

Product Details

Immunogen:	Antibody produced in rabbits immunized with a synthetic peptide corresponding a region of mouse 2010315L10RIK.
Purification:	Antibody is purified by peptide affinity chromatography method.

Target Details

Target:	Use1
Alternative Name:	2010315L10RIK (Use1 Products)
Background:	CDNA library was prepared and sequenced in Mouse Genome Encyclopedia Project of Genome Exploration Research Group in Riken Genomic Sciences Center and Genome Science laboratory in RIKEN.
Molecular Weight:	30 kDa
Gene ID:	67023

Target Details

NCBI Accession:	NP_080193
UniProt:	Q9CQ56

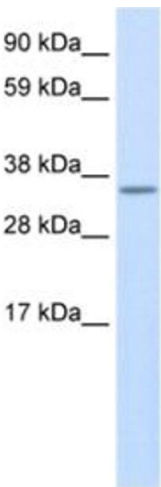
Application Details

Application Notes:	2010315L10RIK antibody can be used for detection of 2010315L10RIK by ELISA at 1:312500. 2010315L10RIK antibody can be used for detection of 2010315L10RIK by western blot at 0.25 µg/mL, and HRP conjugated secondary antibody should be diluted 1:50,000 - 100,000.
Restrictions:	For Research Use only

Handling

Format:	Lyophilized
Reconstitution:	Add 50 µL of distilled water. Final antibody concentration is 1 mg/mL.
Concentration:	1 mg/mL
Buffer:	Antibody is lyophilized in PBS buffer with 2 % sucrose.
Handling Advice:	As with any antibody avoid repeat freeze-thaw cycles.
Storage:	4 °C/-20 °C
Storage Comment:	For short periods of storage (days) store at 4 °C. For longer periods of storage, store 2010315L10RIK antibody at -20 °C.

Images



Western Blotting

Image 1.