

Datasheet for ABIN2461528

anti-TCF23 antibody[Go to Product page](#)**1** Image

Overview

Quantity:	100 µL
Target:	TCF23
Reactivity:	Mouse
Host:	Rabbit
Clonality:	Polyclonal
Conjugate:	This TCF23 antibody is un-conjugated
Application:	Western Blotting (WB), ELISA

Product Details

Immunogen:	Antibody produced in rabbits immunized with a synthetic peptide corresponding a region of human TCF23.
Purification:	Antibody is purified by protein A chromatography method.

Target Details

Target:	TCF23
Alternative Name:	TCF23 (TCF23 Products)
Background:	TCF23 belongs to the basic helix-loop-helix (bHLH) family are involved in various cell differentiation processes
Molecular Weight:	23 kDa
Gene ID:	69852

Target Details

NCBI Accession: [NP_444315](#)

UniProt: [Q9JLR5](#)

Application Details

Application Notes: TCF23 antibody can be used for detection of TCF23 by ELISA at 1:62500. TCF23 antibody can be used for detection of TCF23 by western blot at 2.5 µg/mL, and HRP conjugated secondary antibody should be diluted 1:50,000 - 100,000.

Restrictions: For Research Use only

Handling

Format: Lyophilized

Reconstitution: Add 100 µL of distilled water. Final antibody concentration is 1 mg/mL.

Concentration: 1 mg/mL

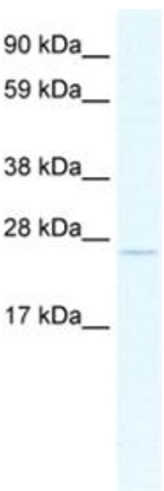
Buffer: Antibody is lyophilized in PBS buffer with 2 % sucrose.

Handling Advice: As with any antibody avoid repeat freeze-thaw cycles.

Storage: 4 °C/-20 °C

Storage Comment: For short periods of storage (days) store at 4 °C. For longer periods of storage, store TCF23 antibody at -20 °C.

Images



Western Blotting

Image 1.