



[Go to Product page](#)

Datasheet for ABIN2461535

## anti-CES4A antibody

### 1 Image

#### Overview

Quantity:	100 µL
Target:	CES4A
Reactivity:	Mouse, Rat
Host:	Rabbit
Clonality:	Polyclonal
Conjugate:	This CES4A antibody is un-conjugated
Application:	Western Blotting (WB), ELISA

#### Product Details

Immunogen:	Antibody produced in rabbits immunized with a synthetic peptide corresponding a region of mouse CES6.
Purification:	Antibody is purified by protein A chromatography method.

#### Target Details

Target:	CES4A
Alternative Name:	CES6 ( <a href="#">CES4A Products</a> )
Background:	Mouse Ces6 is a member of carboxylesterases family. Carboxylesterases are enzymes that catalyze the hydrolysis of a wide range of ester-containing endogenous and xenobiotic compounds.
Molecular Weight:	61 kDa
Gene ID:	102022

## Target Details

NCBI Accession: [NP\\_598721](#)

UniProt: [Q8QZR3](#)

## Application Details

Application Notes: CES6 antibody can be used for detection of CES6 by ELISA at 1:312500. CES6 antibody can be used for detection of CES6 by western blot at 1.25 µg/mL, and HRP conjugated secondary antibody should be diluted 1:50,000 - 100,000.

Restrictions: For Research Use only

## Handling

Format: Lyophilized

Reconstitution: Add 100 µL of distilled water. Final antibody concentration is 1 mg/mL.

Concentration: 1 mg/mL

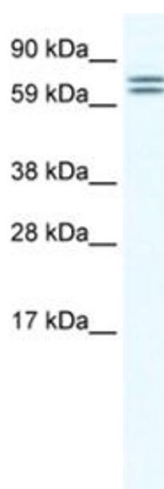
Buffer: Antibody is lyophilized in PBS buffer with 2 % sucrose.

Handling Advice: As with any antibody avoid repeat freeze-thaw cycles.

Storage: 4 °C/-20 °C

Storage Comment: For short periods of storage (days) store at 4 °C. For longer periods of storage, store CES6 antibody at -20 °C.

## Images



### Western Blotting

Image 1.