

Datasheet for ABIN2461643

**anti-EGR4 antibody****1** Image[Go to Product page](#)

## Overview

Quantity:	100 µL
Target:	EGR4
Reactivity:	Human, Mouse, Rat, Dog
Host:	Rabbit
Clonality:	Polyclonal
Conjugate:	This EGR4 antibody is un-conjugated
Application:	Western Blotting (WB), ELISA

## Product Details

Immunogen:	Antibody produced in rabbits immunized with a synthetic peptide corresponding a region of human EGR4.
Purification:	Antibody is purified by peptide affinity chromatography method.

## Target Details

Target:	EGR4
Alternative Name:	EGR4 ( <a href="#">EGR4 Products</a> )
Background:	The nerve growth factor-induced clone C (NGFI-C/EGR4) gene is a zinc-finger transcription factor that is rapidly induced by nerve growth factor in rat pheochromocytoma PC12 cells and by seizure in brain. NGFI-C/EGR4 is closely related to the previously described early response genes, nerve growth factor-induced clone A (NGFI-A or EGR1), EGR2, and EGR3. These four early response (immediate early) proteins all contain very similar zinc-finger DNA binding

## Target Details

domains and five highly homologous subdomains. EGR-4 functionally cooperate with NFAT proteins and induce expression of IL-2 and TNFalpha. Early growth response proteins (EGR) and nuclear factors of activated T cells (NFAT) form heterodimers and regulate proinflammatory cytokine gene expression.

Molecular Weight: 51 kDa

Gene ID: 1961

NCBI Accession: [NP\\_001956](#)

UniProt: [Q05215](#)

## Application Details

Application Notes: EGR4 antibody can be used for detection of EGR4 by ELISA at 1:312500. EGR4 antibody can be used for detection of EGR4 by western blot at 0.0625 µg/mL, and HRP conjugated secondary antibody should be diluted 1:50,000 - 100,000.

Restrictions: For Research Use only

## Handling

Format: Lyophilized

Reconstitution: Add 50 µL of distilled water. Final antibody concentration is 1 mg/mL.

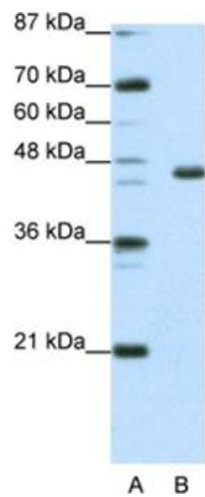
Concentration: 1 mg/mL

Buffer: Antibody is lyophilized in PBS buffer with 2 % sucrose.

Handling Advice: As with any antibody avoid repeat freeze-thaw cycles.

Storage: 4 °C/-20 °C

Storage Comment: For short periods of storage (days) store at 4 °C. For longer periods of storage, store EGR4 antibody at -20 °C.



Western Blotting

Image 1.