

Datasheet for ABIN2461700

anti-ZNF282 antibody[Go to Product page](#)**1** Image

Overview

| | |
|--------------|---------------------------------------|
| Quantity: | 100 µL |
| Target: | ZNF282 |
| Reactivity: | Human, Mouse, Rat |
| Host: | Rabbit |
| Clonality: | Polyclonal |
| Conjugate: | This ZNF282 antibody is un-conjugated |
| Application: | Western Blotting (WB), ELISA |

Product Details

| | |
|---------------|---|
| Immunogen: | Antibody produced in rabbits immunized with a synthetic peptide corresponding a region of human ZNF282. |
| Purification: | Antibody is purified by protein A chromatography method. |

Target Details

| | |
|-------------------|---|
| Target: | ZNF282 |
| Alternative Name: | ZNF282 (ZNF282 Products) |
| Background: | ZNF282 contains 1 KRAB domain and 5 C2H2-type zinc fingers. It belongs to the krueppel C2H2-type zinc-finger protein family and binds to the U5 repressive element (U5RE) of the human T cell leukemia virus type I long terminal repeat. |
| Molecular Weight: | 74 kDa |
| Gene ID: | 8427 |

Target Details

NCBI Accession: [NP_003566](#)

UniProt: [Q9UDV7](#)

Application Details

Application Notes: ZNF282 antibody can be used for detection of ZNF282 by ELISA at 1:312500. ZNF282 antibody can be used for detection of ZNF282 by western blot at 1.25 µg/mL, and HRP conjugated secondary antibody should be diluted 1:50,000 - 100,000.

Restrictions: For Research Use only

Handling

Format: Lyophilized

Reconstitution: Add 100 µL of distilled water. Final antibody concentration is 1 mg/mL.

Concentration: 1 mg/mL

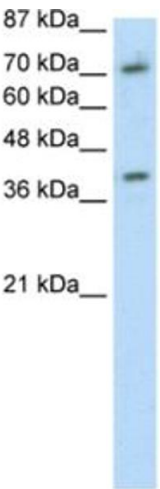
Buffer: Antibody is lyophilized in PBS buffer with 2 % sucrose.

Handling Advice: As with any antibody avoid repeat freeze-thaw cycles.

Storage: 4 °C/-20 °C

Storage Comment: For short periods of storage (days) store at 4 °C. For longer periods of storage, store ZNF282 antibody at -20 °C.

Images



Western Blotting

Image 1.