

Datasheet for ABIN2461728

anti-POU4F2 antibody[Go to Product page](#)**1** Image

Overview

Quantity:	100 µL
Target:	POU4F2
Reactivity:	Human, Dog
Host:	Rabbit
Clonality:	Polyclonal
Conjugate:	This POU4F2 antibody is un-conjugated
Application:	Western Blotting (WB), ELISA

Product Details

Immunogen:	Antibody produced in rabbits immunized with a synthetic peptide corresponding a region of human POU4F2.
Purification:	Antibody is purified by peptide affinity chromatography method.

Target Details

Target:	POU4F2
Alternative Name:	POU4F2 (POU4F2 Products)
Background:	POU4F2 is a member of the POU-domain family of transcription factors. POU-domain proteins have been observed to play important roles in control of cell identity in several systems. A class IV POU-domain protein, POU4F2 is found in human retina exclusively within a subpopulation of ganglion cells where it may play a role in determining or maintaining the identities of a small subset of visual system neurons. POU4F2 is a member of the POU-domain family of

Target Details

transcription factors. POU-domain proteins have been observed to play important roles in control of cell identity in several systems. A class IV POU-domain protein, POU4F2 is found in human retina exclusively within a subpopulation of ganglion cells where it may play a role in determining or maintaining the identities of a small subset of visual system neurons.

Molecular Weight: 43 kDa

Gene ID: 5458

NCBI Accession: [NP_004566](#)

UniProt: [Q12837](#)

Pathways: [Intracellular Steroid Hormone Receptor Signaling Pathway](#), [Sensory Perception of Sound](#)

Application Details

Application Notes: POU4F2 antibody can be used for detection of POU4F2 by ELISA at 1:312500. POU4F2 antibody can be used for detection of POU4F2 by western blot at 0.2 µg/mL, and HRP conjugated secondary antibody should be diluted 1:50,000 - 100,000.

Restrictions: For Research Use only

Handling

Format: Lyophilized

Reconstitution: Add 50 µL of distilled water. Final antibody concentration is 1 mg/mL.

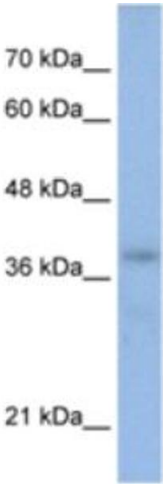
Concentration: 1 mg/mL

Buffer: Antibody is lyophilized in PBS buffer with 2 % sucrose.

Handling Advice: As with any antibody avoid repeat freeze-thaw cycles.

Storage: 4 °C/-20 °C

Storage Comment: For short periods of storage (days) store at 4 °C. For longer periods of storage, store POU4F2 antibody at -20 °C.



Western Blotting

Image 1.