

Datasheet for ABIN2461729

**anti-TCF15 antibody****1** Image[Go to Product page](#)

## Overview

Quantity:	100 µL
Target:	TCF15
Reactivity:	Human, Mouse, Dog, Rat
Host:	Rabbit
Clonality:	Polyclonal
Conjugate:	This TCF15 antibody is un-conjugated
Application:	ELISA, Western Blotting (WB)

## Product Details

Immunogen:	Antibody produced in rabbits immunized with a synthetic peptide corresponding a region of human TCF15.
Purification:	Antibody is purified by protein A chromatography method.

## Target Details

Target:	TCF15
Alternative Name:	TCF15 ( <a href="#">TCF15 Products</a> )
Background:	TCF15 is found in the nucleus and may be involved in the early transcriptional regulation of patterning of the mesoderm. The basic helix-loop-helix protein requires dimerization with another basic helix-loop-helix protein for efficient DNA binding. The protein encoded by this gene is found in the nucleus and may be involved in the early transcriptional regulation of patterning of the mesoderm. The encoded basic helix-loop-helix protein requires dimerization with another

## Target Details

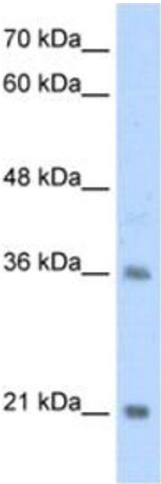
	basic helix-loop-helix protein for efficient DNA binding.
Molecular Weight:	21 kDa
Gene ID:	6939
NCBI Accession:	<a href="#">NP_004600</a>
UniProt:	<a href="#">Q12870</a>
Pathways:	<a href="#">Feeding Behaviour</a>

## Application Details

Application Notes:	TCF15 antibody can be used for detection of TCF15 by ELISA at 1:312500. TCF15 antibody can be used for detection of TCF15 by western blot at 2.5 µg/mL, and HRP conjugated secondary antibody should be diluted 1:50,000 - 100,000.
Restrictions:	For Research Use only

## Handling

Format:	Lyophilized
Reconstitution:	Add 50 µL of distilled water. Final antibody concentration is 1 mg/mL.
Concentration:	1 mg/mL
Buffer:	Antibody is lyophilized in PBS buffer with 2 % sucrose.
Handling Advice:	As with any antibody avoid repeat freeze-thaw cycles.
Storage:	4 °C/-20 °C
Storage Comment:	For short periods of storage (days) store at 4 °C. For longer periods of storage, store TCF15 antibody at -20 °C.



Western Blotting

Image 1.