

Datasheet for ABIN2461782  
**anti-POU4F1 antibody**



[Go to Product page](#)

1 Image

## Overview

Quantity:	100 µL
Target:	POU4F1
Reactivity:	Human, Mouse, Rat, Dog, Zebrafish (Danio rerio)
Host:	Rabbit
Clonality:	Polyclonal
Conjugate:	This POU4F1 antibody is un-conjugated
Application:	Western Blotting (WB), ELISA

## Product Details

Immunogen:	Antibody produced in rabbits immunized with a synthetic peptide corresponding a region of human POU4F1.
Purification:	Antibody is purified by protein A chromatography method.

## Target Details

Target:	POU4F1
Alternative Name:	POU4F1 ( <a href="#">POU4F1 Products</a> )
Background:	POU4F1 is a class IV POU domain-containing transcription factor highly expressed in the developing sensory nervous system and in cells of the B- and T-lymphocytic lineages. BRN3A (POU4F1) is a class IV POU domain-containing transcription factor highly expressed in the developing sensory nervous system and in cells of the B- and T-lymphocytic lineages (Gerrero et al., 1993).

## Target Details

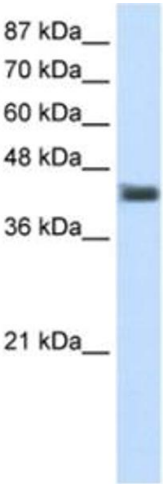
Molecular Weight:	43 kDa
Gene ID:	5457
NCBI Accession:	<a href="#">NP_006228</a>
UniProt:	<a href="#">Q01851</a>
Pathways:	<a href="#">Feeding Behaviour</a>

## Application Details

Application Notes:	POU4F1 antibody can be used for detection of POU4F1 by ELISA at 1:1562500. POU4F1 antibody can be used for detection of POU4F1 by western blot at 1.25 µg/mL, and HRP conjugated secondary antibody should be diluted 1:50,000 - 100,000.
Restrictions:	For Research Use only

## Handling

Format:	Lyophilized
Reconstitution:	Add 100 µL of distilled water. Final antibody concentration is 1 mg/mL.
Concentration:	1 mg/mL
Buffer:	Antibody is lyophilized in PBS buffer with 2 % sucrose.
Handling Advice:	As with any antibody avoid repeat freeze-thaw cycles.
Storage:	4 °C/-20 °C
Storage Comment:	For short periods of storage (days) store at 4 °C. For longer periods of storage, store POU4F1 antibody at -20 °C.



**Western Blotting**

**Image 1.**