

Datasheet for ABIN2461798

anti-PLAGL1 antibody[Go to Product page](#)**1** Image

Overview

Quantity:	100 µL
Target:	PLAGL1
Reactivity:	Human, Dog
Host:	Rabbit
Clonality:	Polyclonal
Conjugate:	This PLAGL1 antibody is un-conjugated
Application:	Western Blotting (WB), ELISA

Product Details

Immunogen:	Antibody produced in rabbits immunized with a synthetic peptide corresponding a region of human PLAGL1.
Purification:	Antibody is purified by protein A chromatography method.

Target Details

Target:	PLAGL1
Alternative Name:	PLAGL1 (PLAGL1 Products)
Background:	PLAGL1 is a C2H2 zinc finger protein with transactivation and DNA-binding activity. This gene has been shown to exhibit antiproliferative activities and is a tumor suppressor gene candidate. This gene encodes a C2H2 zinc finger protein with transactivation and DNA-binding activity. This gene has been shown to exhibit antiproliferative activities and is a tumor suppressor gene candidate. Two transcript variants encoding different isoforms have been

Target Details

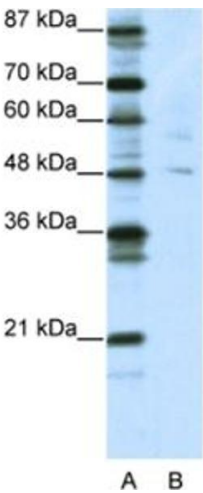
	found for this gene.
Molecular Weight:	45 kDa
Gene ID:	5325
NCBI Accession:	NP_002647
UniProt:	Q9UM63

Application Details

Application Notes:	PLAGL1 antibody can be used for detection of PLAGL1 by ELISA at 1:1562500. PLAGL1 antibody can be used for detection of PLAGL1 by western blot at 5 µg/mL, and HRP conjugated secondary antibody should be diluted 1:50,000 - 100,000.
Restrictions:	For Research Use only

Handling

Format:	Lyophilized
Reconstitution:	Add 100 µL of distilled water. Final antibody concentration is 1 mg/mL.
Concentration:	1 mg/mL
Buffer:	Antibody is lyophilized in PBS buffer with 2 % sucrose.
Handling Advice:	As with any antibody avoid repeat freeze-thaw cycles.
Storage:	4 °C/-20 °C
Storage Comment:	For short periods of storage (days) store at 4 °C. For longer periods of storage, store PLAGL1 antibody at -20 °C.



Western Blotting

Image 1.