

Datasheet for ABIN2461800

anti-LZTR1 antibody**1** Image[Go to Product page](#)

Overview

Quantity:	100 µL
Target:	LZTR1
Reactivity:	Human, Mouse, Rat, Dog
Host:	Rabbit
Clonality:	Polyclonal
Conjugate:	This LZTR1 antibody is un-conjugated
Application:	Western Blotting (WB), ELISA

Product Details

Immunogen:	Antibody produced in rabbits immunized with a synthetic peptide corresponding a region of human LZTR1.
Purification:	Antibody is purified by protein A chromatography method.

Target Details

Target:	LZTR1
Alternative Name:	LZTR1 (LZTR1 Products)
Background:	Leucine-zipper-like transcriptional regulator 1 (LZTR1) is belived to be a DNA-binding protein and transcriptional regulator based on its predicted structural characteristics. The transcript is present in several essential fetal organs and is hemizyously deleted in some DiGeorge syndrome patients. LZTR1 is thought to play a critical role in embryogenesis. Leucine-zipper-like transcriptional regulator 1 is belived to be a DNA-binding protein and transcriptional regulator

Target Details

based on its predicted structural characteristics. The transcript is present in several essential fetal organs and is hemizygotously deleted in some DiGeorge syndrome patients. It is thought to play a critical role in embryogenesis.

Molecular Weight: 95 kDa

Gene ID: 8216

NCBI Accession: [NP_006758](#)

UniProt: [Q8N653](#)

Application Details

Application Notes: LZTR1 antibody can be used for detection of LZTR1 by ELISA at 1:312500. LZTR1 antibody can be used for detection of LZTR1 by western blot at 2.5 µg/mL, and HRP conjugated secondary antibody should be diluted 1:50,000 - 100,000.

Restrictions: For Research Use only

Handling

Format: Lyophilized

Reconstitution: Add 100 µL of distilled water. Final antibody concentration is 1 mg/mL.

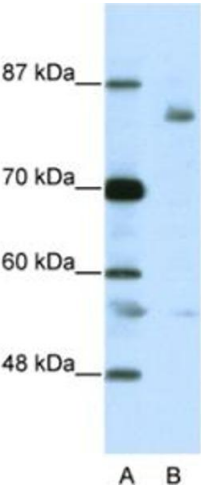
Concentration: 1 mg/mL

Buffer: Antibody is lyophilized in PBS buffer with 2 % sucrose.

Handling Advice: As with any antibody avoid repeat freeze-thaw cycles.

Storage: 4 °C/-20 °C

Storage Comment: For short periods of storage (days) store at 4 °C. For longer periods of storage, store LZTR1 antibody at -20 °C.



Western Blotting

Image 1.