

Datasheet for ABIN2461896

anti-Use1 antibody[Go to Product page](#)**1** Image

Overview

Quantity:	100 µL
Target:	Use1
Reactivity:	Human
Host:	Rabbit
Clonality:	Polyclonal
Conjugate:	This Use1 antibody is un-conjugated
Application:	Western Blotting (WB), ELISA, Immunohistochemistry (IHC)

Product Details

Immunogen:	Antibody produced in rabbits immunized with a synthetic peptide corresponding a region of human MDS032.
Purification:	Antibody is purified by peptide affinity chromatography method.

Target Details

Target:	Use1
Alternative Name:	MDS032 (Use1 Products)
Background:	MDS032 belongs to the USE1 family and is a component of a SNARE complex which may be involved in targeting and fusion of Golgi-derived retrograde transport vesicles with the ER.
Molecular Weight:	29 kDa
Gene ID:	55850

Target Details

NCBI Accession:	NP_060937
UniProt:	Q9NZ43

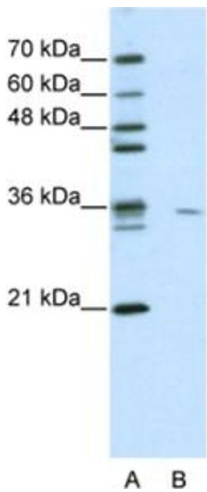
Application Details

Application Notes:	MDS032 antibody can be used for detection of MDS032 by ELISA at 1:62500. MDS032 antibody can be used for detection of MDS032 by western blot at 0.5 µg/mL, and HRP conjugated secondary antibody should be diluted 1:50,000 - 100,000.
Restrictions:	For Research Use only

Handling

Format:	Lyophilized
Reconstitution:	Add 50 µL of distilled water. Final antibody concentration is 1 mg/mL.
Concentration:	1 mg/mL
Buffer:	Antibody is lyophilized in PBS buffer with 2 % sucrose.
Handling Advice:	As with any antibody avoid repeat freeze-thaw cycles.
Storage:	4 °C/-20 °C
Storage Comment:	For short periods of storage (days) store at 4 °C. For longer periods of storage, store MDS032 antibody at -20 °C.

Images



Western Blotting

Image 1.