

Datasheet for ABIN2461911
anti-GRHL3 antibody



[Go to Product page](#)

1 Image

Overview

Quantity:	100 µL
Target:	GRHL3
Reactivity:	Human, Dog
Host:	Rabbit
Clonality:	Polyclonal
Conjugate:	This GRHL3 antibody is un-conjugated
Application:	Western Blotting (WB), ELISA, Immunohistochemistry (IHC)

Product Details

Immunogen:	Antibody produced in rabbits immunized with a synthetic peptide corresponding a region of human GRHL3.
------------	--

Target Details

Target:	GRHL3
Alternative Name:	GRHL3 (GRHL3 Products)
Background:	GRHL3 is a member of the grainyhead family of transcription factors. GRHL3 interacts with leader-binding protein 32 (LBP-32) and brother of mammalian grainyhead (BOM), and may function as a transcription factor during development. Multiple transcript variants encoding distinct isoforms have been identified for this gene. This gene encodes a member of the grainyhead family of transcription factors. The encoded protein interacts with leader-binding protein 32 (LBP-32) and brother of mammalian grainyhead (BOM), and may function as a transcription factor during development. Multiple transcript variants encoding distinct isoforms

Target Details

have been identified for this gene. Additional transcript variants have been described, but their biological nature has not been determined. This gene encodes a member of the grainyhead family of transcription factors. The encoded protein interacts with leader-binding protein 32 (LBP-32) and brother of mammalian grainyhead (BOM), and may function as a transcription factor during development. Multiple transcript variants encoding distinct isoforms have been identified for this gene. Additional transcript variants have been described, but their biological nature has not been determined.

Molecular Weight: 68 kDa, 68 kDa, 57 kDa

Gene ID: 57822

NCBI Accession: [NP_067003](#)

UniProt: [Q8TE85](#)

Application Details

Application Notes: GRHL3 antibody can be used for detection of GRHL3 by ELISA at 1:1562500. GRHL3 antibody can be used for detection of GRHL3 by western blot at 2.5 µg/mL, and HRP conjugated secondary antibody should be diluted 1:50,000 - 100,000.

Restrictions: For Research Use only

Handling

Format: Lyophilized

Reconstitution: Add 100 µL of distilled water. Final antibody concentration is 1 mg/mL.

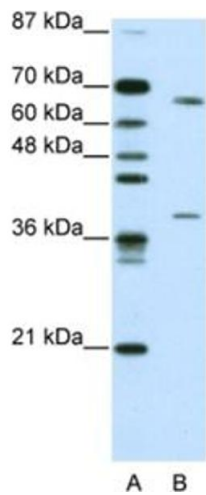
Concentration: 1 mg/mL

Buffer: Antibody is lyophilized in PBS buffer with 2 % sucrose.

Handling Advice: As with any antibody avoid repeat freeze-thaw cycles.

Storage: 4 °C/-20 °C

Storage Comment: For short periods of storage (days) store at 4 °C. For longer periods of storage, store GRHL3 antibody at -20 °C.



Western Blotting

Image 1.