



Datasheet for ABIN2461913 anti-PRDM12 antibody



[Go to Product page](#)

1 Image

Overview

Quantity:	100 µL
Target:	PRDM12
Reactivity:	Human, Mouse, Rat
Host:	Rabbit
Clonality:	Polyclonal
Conjugate:	This PRDM12 antibody is un-conjugated
Application:	Western Blotting (WB), ELISA

Product Details

Immunogen:	Antibody produced in rabbits immunized with a synthetic peptide corresponding a region of human PRDM12.
Purification:	Antibody is purified by protein A chromatography method.

Target Details

Target:	PRDM12
Alternative Name:	PRDM12 (PRDM12 Products)
Background:	PRDM12 belongs to PR-domain family which are involved in human cancers in an unusual yin-yang fashion. Two products are normally produced from a PR-domain family member which differ by the presence or absence of the PR domain, the PR-plus product is disrupted or underexpressed whereas the PR-minus product is present or overexpressed in cancer cells. This imbalance in the amount of the two products, a result of either genetic or epigenetic

Target Details

events, appears to be an important cause of malignancy. PRDM12 may have a potential role in the pathogenesis of chronic myeloid leukaemia with derivative chromosome 9 deletion.

Molecular Weight: 40 kDa

Gene ID: 59335

NCBI Accession: [NP_067632](#)

UniProt: [Q9H4Q4](#)

Application Details

Application Notes: PRDM12 antibody can be used for detection of PRDM12 by ELISA at 1:62500. PRDM12 antibody can be used for detection of PRDM12 by western blot at 2.5 µg/mL, and HRP conjugated secondary antibody should be diluted 1:50,000 - 100,000.

Restrictions: For Research Use only

Handling

Format: Lyophilized

Reconstitution: Add 100 µL of distilled water. Final antibody concentration is 1 mg/mL.

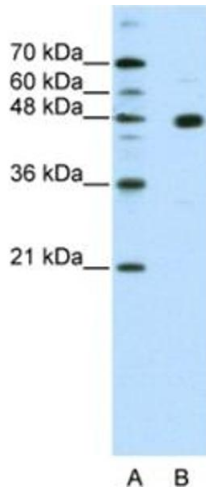
Concentration: 1 mg/mL

Buffer: Antibody is lyophilized in PBS buffer with 2 % sucrose.

Handling Advice: As with any antibody avoid repeat freeze-thaw cycles.

Storage: 4 °C/-20 °C

Storage Comment: For short periods of storage (days) store at 4 °C. For longer periods of storage, store PRDM12 antibody at -20 °C.



Western Blotting

Image 1.