

Datasheet for ABIN2461939
anti-CBLL1 antibody



[Go to Product page](#)

1 Image

Overview

Quantity:	100 µL
Target:	CBLL1
Reactivity:	Human, Mouse, Rat, Dog
Host:	Rabbit
Clonality:	Polyclonal
Conjugate:	This CBLL1 antibody is un-conjugated
Application:	Western Blotting (WB), ELISA

Product Details

Immunogen:	Antibody produced in rabbits immunized with a synthetic peptide corresponding a region of human CBLL1.
Purification:	Antibody is purified by protein A chromatography method.

Target Details

Target:	CBLL1
Alternative Name:	CBLL1 (CBLL1 Products)
Background:	Epithelial cell cadherin is endocytosed as a consequence of tyrosine phosphorylation and ubiquitination. CBLL1 is an E3 ubiquitin ligase that mediates ubiquitination of the CDH1 complex. Epithelial cell cadherin (CDH1, MIM 192090) is endocytosed as a consequence of tyrosine phosphorylation and ubiquitination. HAKAI is an E3 ubiquitin ligase (see UBE3A, MIM 601623) that mediates ubiquitination of the CDH1 complex.

Target Details

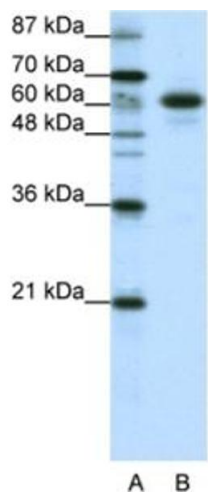
Molecular Weight:	55 kDa
Gene ID:	79872
NCBI Accession:	NP_079090
UniProt:	Q75N03

Application Details

Application Notes:	CBLL1 antibody can be used for detection of CBLL1 by ELISA at 1:62500. CBLL1 antibody can be used for detection of CBLL1 by western blot at 1.25 µg/mL, and HRP conjugated secondary antibody should be diluted 1:50,000 - 100,000.
Restrictions:	For Research Use only

Handling

Format:	Lyophilized
Reconstitution:	Add 100 µL of distilled water. Final antibody concentration is 1 mg/mL.
Concentration:	1 mg/mL
Buffer:	Antibody is lyophilized in PBS buffer with 2 % sucrose.
Handling Advice:	As with any antibody avoid repeat freeze-thaw cycles.
Storage:	4 °C/-20 °C
Storage Comment:	For short periods of storage (days) store at 4 °C. For longer periods of storage, store CBLL1 antibody at -20 °C.



Western Blotting

Image 1.