

Datasheet for ABIN2461945
anti-OTP antibody[Go to Product page](#)

1 Image

Overview

Quantity:	100 µL
Target:	OTP
Reactivity:	Human, Mouse, Rat, Dog
Host:	Rabbit
Clonality:	Polyclonal
Conjugate:	This OTP antibody is un-conjugated
Application:	Western Blotting (WB), ELISA

Product Details

Immunogen:	Antibody produced in rabbits immunized with a synthetic peptide corresponding a region of human OTP.
Purification:	Antibody is purified by peptide affinity chromatography method.

Target Details

Target:	OTP
Alternative Name:	OTP (OTP Products)
Background:	OTP is a member of the homeodomain (HD) family. HD family proteins are helix-turn-helix transcription factors that play key roles in the specification of cell fates. This protein may function during brain development. This gene encodes a member of the homeodomain (HD) family. HD family proteins are helix-turn-helix transcription factors that play key roles in the specification of cell fates. This protein may function during brain development.

Target Details

Molecular Weight: 34 kDa, 33 kDa

Gene ID: 23440

NCBI Accession: [NP_115485](#)

UniProt: [Q5XKR4](#)

Application Details

Application Notes: OTP antibody can be used for detection of OTP by ELISA at 1:62500. OTP antibody can be used for detection of OTP by western blot at 0.5 µg/mL, and HRP conjugated secondary antibody should be diluted 1:50,000 - 100,000.

Restrictions: For Research Use only

Handling

Format: Lyophilized

Reconstitution: Add 50 µL of distilled water. Final antibody concentration is 1 mg/mL.

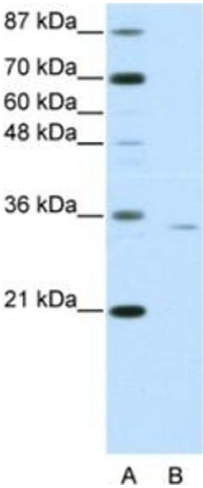
Concentration: 1 mg/mL

Buffer: Antibody is lyophilized in PBS buffer with 2 % sucrose.

Handling Advice: As with any antibody avoid repeat freeze-thaw cycles.

Storage: 4 °C/-20 °C

Storage Comment: For short periods of storage (days) store at 4 °C. For longer periods of storage, store OTP antibody at -20 °C.



Western Blotting

Image 1.