

Datasheet for ABIN2461953
anti-ZNF496 antibody



[Go to Product page](#)

1 Image

Overview

Quantity:	100 µL
Target:	ZNF496
Reactivity:	Mouse, Human, Dog
Host:	Rabbit
Clonality:	Polyclonal
Conjugate:	This ZNF496 antibody is un-conjugated
Application:	Western Blotting (WB), ELISA

Product Details

Immunogen:	Antibody produced in rabbits immunized with a synthetic peptide corresponding a region of human ZNF496.
Purification:	Antibody is purified by protein A chromatography method.

Target Details

Target:	ZNF496
Alternative Name:	ZNF496 (ZNF496 Products)
Background:	ZNF496 contains a SCAN box, a KRAB-A domain, and four consensus C2H2-type zinc fingers preceded by a unique finger derivative, referred to herein as the C2HR motif. The C2HR motif functions to mediate protein-protein interaction with the cysteine-rich (C5HCH) domain of NSD1 in a Zn (II)-dependent fashion, and when tethered to RNA polymerase II promoters, represses transcription in an NSD1-dependent manner. ZNF496 contains a novel type of zinc

Target Details

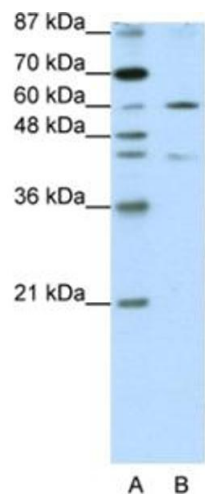
	finger motif that functions as a docking site for NSD1 and is more than just a degenerate evolutionary remnant of a C2H2 motif.
Molecular Weight:	67 kDa
Gene ID:	84838
NCBI Accession:	NP_116141
UniProt:	Q96IT1

Application Details

Application Notes:	ZNF496 antibody can be used for detection of ZNF496 by ELISA at 1:62500. ZNF496 antibody can be used for detection of ZNF496 by western blot at 1.25 µg/mL, and HRP conjugated secondary antibody should be diluted 1:50,000 - 100,000.
Restrictions:	For Research Use only

Handling

Format:	Lyophilized
Reconstitution:	Add 100 µL of distilled water. Final antibody concentration is 1 mg/mL.
Concentration:	1 mg/mL
Buffer:	Antibody is lyophilized in PBS buffer with 2 % sucrose.
Handling Advice:	As with any antibody avoid repeat freeze-thaw cycles.
Storage:	4 °C/-20 °C
Storage Comment:	For short periods of storage (days) store at 4 °C. For longer periods of storage, store ZNF496 antibody at -20 °C.



Western Blotting

Image 1.