



Datasheet for ABIN2461992

## anti-GLIS3 antibody



[Go to Product page](#)

### 1 Image

#### Overview

Quantity:	100 µL
Target:	GLIS3
Reactivity:	Human, Dog
Host:	Rabbit
Clonality:	Polyclonal
Conjugate:	This GLIS3 antibody is un-conjugated
Application:	Western Blotting (WB), ELISA

#### Product Details

Immunogen:	Antibody produced in rabbits immunized with a synthetic peptide corresponding a region of human GLIS3.
Purification:	Antibody is purified by protein A chromatography method.

#### Target Details

Target:	GLIS3
Alternative Name:	GLIS3 ( <a href="#">GLIS3 Products</a> )
Background:	GLIS3 is a member of the GLI-similar zinc finger protein family and has five C2H2-type zinc finger domains. GLIS3 functions as both a repressor and activator of transcription and is specifically involved in the development of pancreatic beta cells, the thyroid, eye, liver and kidney. Mutations in this gene have been associated with neonatal diabetes and congenital hypothyroidism (NDH).

## Target Details

---

Molecular Weight: 84 kDa, 100 kDa

Gene ID: 169792

NCBI Accession: [NP\\_689842](#)

UniProt: [Q1PHJ8](#)

## Application Details

---

Application Notes: GLIS3 antibody can be used for detection of GLIS3 by ELISA at 1:62500. GLIS3 antibody can be used for detection of GLIS3 by western blot at 2.5 µg/mL, and HRP conjugated secondary antibody should be diluted 1:50,000 - 100,000.

Restrictions: For Research Use only

## Handling

---

Format: Lyophilized

Reconstitution: Add 100 µL of distilled water. Final antibody concentration is 1 mg/mL.

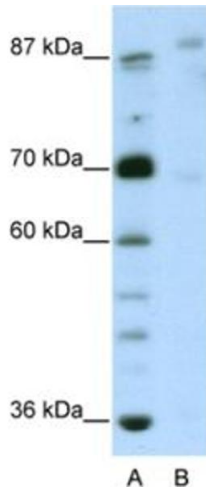
Concentration: 1 mg/mL

Buffer: Antibody is lyophilized in PBS buffer with 2 % sucrose.

Handling Advice: As with any antibody avoid repeat freeze-thaw cycles.

Storage: 4 °C/-20 °C

Storage Comment: For short periods of storage (days) store at 4 °C. For longer periods of storage, store GLIS3 antibody at -20 °C.



### Western Blotting

Image 1.