

Datasheet for ABIN2462031

anti-EHF antibody[Go to Product page](#)**1** Image

Overview

Quantity:	100 µL
Target:	EHF
Reactivity:	Mouse
Host:	Rabbit
Clonality:	Polyclonal
Conjugate:	This EHF antibody is un-conjugated
Application:	Western Blotting (WB), Immunohistochemistry (IHC), ELISA

Product Details

Immunogen:	Antibody produced in rabbits immunized with a synthetic peptide corresponding a region of mouse Ehf.
Purification:	Antibody is purified by peptide affinity chromatography method.

Target Details

Target:	EHF
Alternative Name:	Ehf (EHF Products)
Background:	Ehf is a transcriptional activator that may play a role in regulating epithelial cell differentiation and proliferation. It may act as a repressor for a specific subset of ETS/AP-1-responsive genes, and as a modulator of the nuclear response to mitogen-activated protein kinase signaling cascades. It binds to DNA sequences containing the consensus nucleotide core sequence GGAA and involved in regulation of TNFRSF10B/DR5 expression through Ets-binding

Target Details

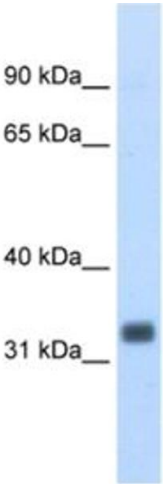
	sequences on the TNFRSF10B/DR5 promoter
Molecular Weight:	33 kDa
Gene ID:	13661
NCBI Accession:	NP_031940
UniProt:	Q9NZC4

Application Details

Application Notes:	Ehf antibody can be used for detection of Ehf by ELISA at 1:312500. Ehf antibody can be used for detection of Ehf by western blot at 1.0 µg/mL, and HRP conjugated secondary antibody should be diluted 1:50,000 - 100,000.
Restrictions:	For Research Use only

Handling

Format:	Lyophilized
Reconstitution:	Add 50 µL of distilled water. Final antibody concentration is 1 mg/mL.
Concentration:	1 mg/mL
Buffer:	Antibody is lyophilized in PBS buffer with 2 % sucrose.
Handling Advice:	As with any antibody avoid repeat freeze-thaw cycles.
Storage:	4 °C/-20 °C
Storage Comment:	For short periods of storage (days) store at 4 °C. For longer periods of storage, store Ehf antibody at -20 °C.



Western Blotting

Image 1.