

Datasheet for ABIN2462038
anti-HOMER1 antibody



[Go to Product page](#)

1 Image

Overview

Quantity:	100 µL
Target:	HOMER1
Reactivity:	Human, Mouse, Dog
Host:	Rabbit
Clonality:	Polyclonal
Conjugate:	This HOMER1 antibody is un-conjugated
Application:	Western Blotting (WB), ELISA

Product Details

Immunogen:	Antibody produced in rabbits immunized with a synthetic peptide corresponding a region of human HOMER1.
Purification:	Antibody is purified by peptide affinity chromatography method.

Target Details

Target:	HOMER1
Alternative Name:	HOMER1 (HOMER1 Products)
Background:	HOMER1 is a member of the homer family of dendritic proteins. Members of this family regulate group 1 metabotropic glutamate receptor function. This gene encodes a member of the homer family of dendritic proteins. Members of this family regulate group 1 metabotropic glutamate receptor function.
Molecular Weight:	39 kDa

Target Details

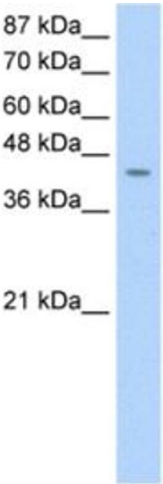
Gene ID:	9456
NCBI Accession:	NP_004263
UniProt:	Q86YM7
Pathways:	Skeletal Muscle Fiber Development

Application Details

Application Notes:	HOMER1 antibody can be used for detection of HOMER1 by ELISA at 1:62500. HOMER1 antibody can be used for detection of HOMER1 by western blot at 0.5 µg/mL, and HRP conjugated secondary antibody should be diluted 1:50,000 - 100,000.
Restrictions:	For Research Use only

Handling

Format:	Lyophilized
Reconstitution:	Add 50 µL of distilled water. Final antibody concentration is 1 mg/mL.
Concentration:	1 mg/mL
Buffer:	Antibody is lyophilized in PBS buffer with 2 % sucrose.
Handling Advice:	As with any antibody avoid repeat freeze-thaw cycles.
Storage:	4 °C/-20 °C
Storage Comment:	For short periods of storage (days) store at 4 °C. For longer periods of storage, store HOMER1 antibody at -20 °C.



Western Blotting

Image 1.