

Datasheet for ABIN2462052

anti-RPL6 antibody**1** Image[Go to Product page](#)

Overview

| | |
|--------------|-------------------------------------|
| Quantity: | 100 µL |
| Target: | RPL6 |
| Reactivity: | Human, Dog |
| Host: | Rabbit |
| Clonality: | Polyclonal |
| Conjugate: | This RPL6 antibody is un-conjugated |
| Application: | Western Blotting (WB), ELISA |

Product Details

| | |
|---------------|---|
| Immunogen: | Antibody produced in rabbits immunized with a synthetic peptide corresponding a region of human RPL6. |
| Purification: | Antibody is purified by protein A chromatography method. |

Target Details

| | |
|-------------------|--|
| Target: | RPL6 |
| Alternative Name: | RPL6 (RPL6 Products) |
| Background: | RPL6 is a ribosomal protein that is a component of the 60S subunit. RPL6 belongs to the L6E family of ribosomal proteins. It is located in the cytoplasm. The protein can bind specifically to domain C of the tax-responsive enhancer element of human T-cell leukemia virus type 1, and it has been suggested that the protein may participate in tax-mediated transactivation of transcription. As is typical for genes encoding ribosomal proteins, there are multiple processed |

Target Details

pseudogenes of this gene dispersed through the genome. Ribosomes, the organelles that catalyze protein synthesis, consist of a small 40S subunit and a large 60S subunit. Together these subunits are composed of 4 RNA species and approximately 80 structurally distinct proteins. This gene encodes a ribosomal protein that is a component of the 60S subunit. The protein belongs to the L6E family of ribosomal proteins. It is located in the cytoplasm. The protein can bind specifically to domain C of the tax-responsive enhancer element of human T-cell leukemia virus type 1, and it has been suggested that the protein may participate in tax-mediated transactivation of transcription. As is typical for genes encoding ribosomal proteins, there are multiple processed pseudogenes of this gene dispersed through the genome. Two alternatively spliced transcript variants encoding the same protein have been found for this gene.

Molecular Weight: 32 kDa, 33 kDa, 31 kDa, 31 kDa

Gene ID: 6128

NCBI Accession: [NP_001019833](#)

UniProt: [Q02878](#)

Application Details

Application Notes: RPL6 antibody can be used for detection of RPL6 by ELISA at 1:62500. RPL6 antibody can be used for detection of RPL6 by western blot at 2.5 µg/mL, and HRP conjugated secondary antibody should be diluted 1:50,000 - 100,000.

Restrictions: For Research Use only

Handling

Format: Lyophilized

Reconstitution: Add 100 µL of distilled water. Final antibody concentration is 1 mg/mL.

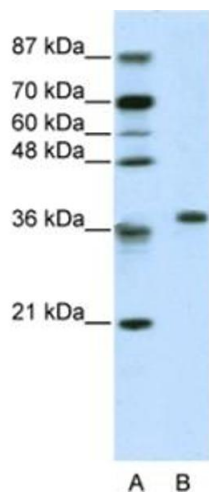
Concentration: 1 mg/mL

Buffer: Antibody is lyophilized in PBS buffer with 2 % sucrose.

Handling Advice: As with any antibody avoid repeat freeze-thaw cycles.

Storage: 4 °C/-20 °C

Storage Comment: For short periods of storage (days) store at 4 °C. For longer periods of storage, store RPL6 antibody at -20 °C.



Western Blotting

Image 1.