



## Datasheet for ABIN2462057 anti-RPL32 antibody



[Go to Product page](#)

### 1 Image

#### Overview

Quantity:	100 µL
Target:	RPL32
Reactivity:	Human, Mouse, Rat, Dog
Host:	Rabbit
Clonality:	Polyclonal
Conjugate:	This RPL32 antibody is un-conjugated
Application:	Western Blotting (WB), ELISA

#### Product Details

Immunogen:	Antibody produced in rabbits immunized with a synthetic peptide corresponding a region of human RPL32.
Purification:	Antibody is purified by protein A chromatography method.

#### Target Details

Target:	RPL32
Alternative Name:	RPL32 ( <a href="#">RPL32 Products</a> )
Background:	RPL32 is a ribosomal protein that is a component of the 60S subunit. RPL32 belongs to the L32E family of ribosomal proteins. It is located in the cytoplasm. Although some studies have mapped this gene to 3q13.3-q21, it is believed to map to 3p25-p24. As is typical for genes encoding ribosomal proteins, there are multiple processed pseudogenes of this gene dispersed through the genome. Ribosomes, the organelles that catalyze protein synthesis, consist of a

## Target Details

---

small 40S subunit and a large 60S subunit. Together these subunits are composed of 4 RNA species and approximately 80 structurally distinct proteins. This gene encodes a ribosomal protein that is a component of the 60S subunit. The protein belongs to the L32E family of ribosomal proteins. It is located in the cytoplasm. Although some studies have mapped this gene to 3q13.3-q21, it is believed to map to 3p25-p24. As is typical for genes encoding ribosomal proteins, there are multiple processed pseudogenes of this gene dispersed through the genome. Alternatively spliced transcript variants encoding the same protein have been observed for this gene.

Molecular Weight: 15 kDa, 16 kDa, 16 kDa, 16 kDa, 16 kDa, 16 kDa, 16 kDa, 16 kDa

Gene ID: 6161

NCBI Accession: [NP\\_000985](#)

UniProt: [P62910](#)

## Application Details

---

Application Notes: RPL32 antibody can be used for detection of RPL32 by ELISA at 1:312500. RPL32 antibody can be used for detection of RPL32 by western blot at 2.5 µg/mL, and HRP conjugated secondary antibody should be diluted 1:50,000 - 100,000.

Restrictions: For Research Use only

## Handling

---

Format: Lyophilized

Reconstitution: Add 100 µL of distilled water. Final antibody concentration is 1 mg/mL.

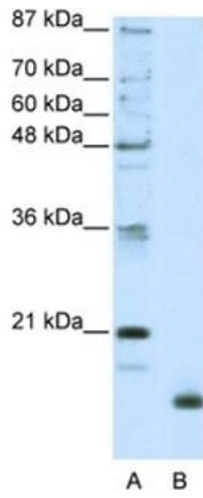
Concentration: 1 mg/mL

Buffer: Antibody is lyophilized in PBS buffer with 2 % sucrose.

Handling Advice: As with any antibody avoid repeat freeze-thaw cycles.

Storage: 4 °C/-20 °C

Storage Comment: For short periods of storage (days) store at 4 °C. For longer periods of storage, store RPL32 antibody at -20 °C.



### Western Blotting

Image 1.