

Datasheet for ABIN2462124
anti-NOVA2 antibody



[Go to Product page](#)

1 Image

Overview

Quantity:	100 µL
Target:	NOVA2
Reactivity:	Human, Zebrafish (Danio rerio)
Host:	Rabbit
Clonality:	Polyclonal
Conjugate:	This NOVA2 antibody is un-conjugated
Application:	Western Blotting (WB), ELISA

Product Details

Immunogen:	Antibody produced in rabbits immunized with a synthetic peptide corresponding a region of human NOVA2.
Purification:	Antibody is purified by protein A chromatography method.

Target Details

Target:	NOVA2
Alternative Name:	NOVA2 (NOVA2 Products)
Background:	NOVA2 may regulate RNA splicing or metabolism in a specific subset of developing neurons. It binds single strand RNA.
Molecular Weight:	54 kDa
Gene ID:	4858

Target Details

NCBI Accession:	NP_002507
UniProt:	Q9UNW9

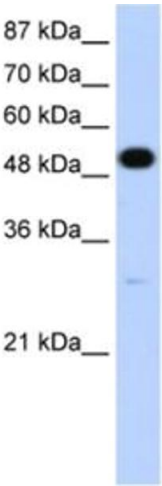
Application Details

Application Notes:	NOVA2 antibody can be used for detection of NOVA2 by ELISA at 1:1562500. NOVA2 antibody can be used for detection of NOVA2 by western blot at 1.25 µg/mL, and HRP conjugated secondary antibody should be diluted 1:50,000 - 100,000.
Restrictions:	For Research Use only

Handling

Format:	Lyophilized
Reconstitution:	Add 100 µL of distilled water. Final antibody concentration is 1 mg/mL.
Concentration:	1 mg/mL
Buffer:	Antibody is lyophilized in PBS buffer with 2 % sucrose.
Handling Advice:	As with any antibody avoid repeat freeze-thaw cycles.
Storage:	4 °C/-20 °C
Storage Comment:	For short periods of storage (days) store at 4 °C. For longer periods of storage, store NOVA2 antibody at -20 °C.

Images



Western Blotting

Image 1.