

Datasheet for ABIN2462223

anti-RPP29 antibody[Go to Product page](#)**1** Image

Overview

Quantity:	100 µL
Target:	RPP29 (POP4)
Reactivity:	Human, Dog
Host:	Rabbit
Clonality:	Polyclonal
Conjugate:	This RPP29 antibody is un-conjugated
Application:	Western Blotting (WB), ELISA, Immunohistochemistry (IHC)

Product Details

Immunogen:	Antibody produced in rabbits immunized with a synthetic peptide corresponding a region of human POP4.
Purification:	Antibody is purified by protein A chromatography method.

Target Details

Target:	RPP29 (POP4)
Alternative Name:	POP4 (POP4 Products)
Background:	POP4 is a part of ribonuclease P, a protein complex that generates mature tRNA molecules by cleaving their 5'-ends. It may function with RPP38 to coordinate the nucleolar targeting and/or assembly of RNase P.
Molecular Weight:	24 kDa
Gene ID:	10775

Target Details

NCBI Accession: [NP_006618](#)

UniProt: [O95707](#)

Application Details

Application Notes: POP4 antibody can be used for detection of POP4 by ELISA at 1:312500. POP4 antibody can be used for detection of POP4 by western blot at 1.25 µg/mL, and HRP conjugated secondary antibody should be diluted 1:50,000 - 100,000.

Restrictions: For Research Use only

Handling

Format: Lyophilized

Reconstitution: Add 100 µL of distilled water. Final antibody concentration is 1 mg/mL.

Concentration: 1 mg/mL

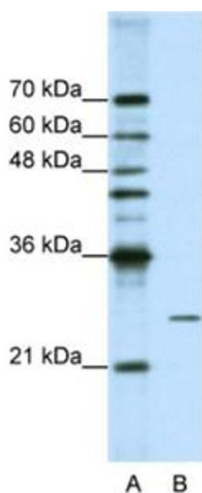
Buffer: Antibody is lyophilized in PBS buffer with 2 % sucrose.

Handling Advice: As with any antibody avoid repeat freeze-thaw cycles.

Storage: 4 °C/-20 °C

Storage Comment: For short periods of storage (days) store at 4 °C. For longer periods of storage, store POP4 antibody at -20 °C.

Images



Western Blotting

Image 1.