

Datasheet for ABIN2462225

**anti-SURF6 antibody**[Go to Product page](#)**1** Image

## Overview

Quantity:	100 µL
Target:	SURF6
Reactivity:	Human
Host:	Rabbit
Clonality:	Polyclonal
Conjugate:	This SURF6 antibody is un-conjugated
Application:	Western Blotting (WB), ELISA

## Product Details

Immunogen:	Antibody produced in rabbits immunized with a synthetic peptide corresponding a region of human SURF6.
Purification:	Antibody is purified by protein A chromatography method.

## Target Details

Target:	SURF6
Alternative Name:	SURF6 ( <a href="#">SURF6 Products</a> )
Background:	This gene is located in the surfeit gene cluster, a group of very tightly linked genes that do not share sequence similarity. The gene demonstrates features of a housekeeping gene, being ubiquitously expressed, and the encoded protein has been localized to the nucleolus. The protein includes motifs found in both the mouse and fish orthologs, which suggests a putative function as a nucleolar-matrix protein with nucleic acid-binding properties, based on

## Target Details

characteristics determined in mouse. This gene is located in the surfet gene cluster, a group of very tightly linked genes that do not share sequence similarity. The gene demonstrates features of a housekeeping gene, being ubiquitously expressed, and the encoded protein has been localized to the nucleolus. The protein includes motifs found in both the mouse and fish orthologs, which suggests a putative function as a nucleolar-matrix protein with nucleic acid-binding properties, based on characteristics determined in mouse. This gene is located in the surfet gene cluster, a group of very tightly linked genes that do not share sequence similarity. The gene demonstrates features of a housekeeping gene, being ubiquitously expressed, and the encoded protein has been localized to the nucleolus. The protein includes motifs found in both the mouse and fish orthologs, which suggests a putative function as a nucleolar-matrix protein with nucleic acid-binding properties, based on characteristics determined in mouse.

Molecular Weight: 40 kDa

Gene ID: 6838

NCBI Accession: [NP\\_006744](#)

UniProt: [O75683](#)

Pathways: [Ribonucleoprotein Complex Subunit Organization](#), [Ribosome Assembly](#)

## Application Details

Application Notes: SURF6 antibody can be used for detection of SURF6 by ELISA at 1:312500. SURF6 antibody can be used for detection of SURF6 by western blot at 1.25 µg/mL, and HRP conjugated secondary antibody should be diluted 1:50,000 - 100,000.

Restrictions: For Research Use only

## Handling

Format: Lyophilized

Reconstitution: Add 100 µL of distilled water. Final antibody concentration is 1 mg/mL.

Concentration: 1 mg/mL

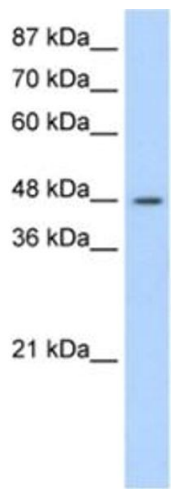
Buffer: Antibody is lyophilized in PBS buffer with 2 % sucrose.

Handling Advice: As with any antibody avoid repeat freeze-thaw cycles.

Storage: 4 °C/-20 °C

Storage Comment: For short periods of storage (days) store at 4 °C. For longer periods of storage, store SURF6

antibody at -20 °C.



**Western Blotting**

**Image 1.**