

Datasheet for ABIN2462232
anti-SNRPD1 antibody



[Go to Product page](#)

1 Image

Overview

Quantity:	100 µL
Target:	SNRPD1
Reactivity:	Human, Mouse, Rat, Dog
Host:	Rabbit
Clonality:	Polyclonal
Conjugate:	This SNRPD1 antibody is un-conjugated
Application:	Western Blotting (WB), ELISA, Immunohistochemistry (IHC)

Product Details

Immunogen:	Antibody produced in rabbits immunized with a synthetic peptide corresponding a region of human SNRPD1.
Purification:	Antibody is purified by peptide affinity chromatography method.

Target Details

Target:	SNRPD1
Alternative Name:	SNRPD1 (SNRPD1 Products)
Background:	SNRPD1 is a small nuclear ribonucleoprotein that belongs to the SNRNP core protein family. The protein may act as a charged protein scaffold to promote SNRNP assembly or strengthen SNRNP-SNRNP interactions through nonspecific electrostatic contacts with RNA. This gene encodes a small nuclear ribonucleoprotein that belongs to the SNRNP core protein family. The protein may act as a charged protein scaffold to promote SNRNP assembly or strengthen

Target Details

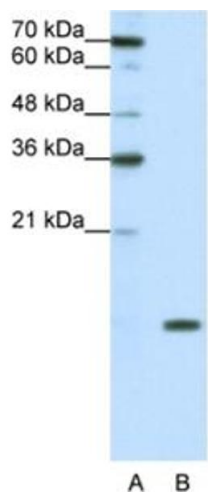
	SNRNP-SNRNP interactions through nonspecific electrostatic contacts with RNA.
Molecular Weight:	13 kDa
Gene ID:	6632
NCBI Accession:	NP_008869
UniProt:	P62314
Pathways:	Ribonucleoprotein Complex Subunit Organization

Application Details

Application Notes:	SNRPD1 antibody can be used for detection of SNRPD1 by ELISA at 1:312500. SNRPD1 antibody can be used for detection of SNRPD1 by western blot at 0.25 µg/mL, and HRP conjugated secondary antibody should be diluted 1:50,000 - 100,000.
Restrictions:	For Research Use only

Handling

Format:	Lyophilized
Reconstitution:	Add 50 µL of distilled water. Final antibody concentration is 1 mg/mL.
Concentration:	1 mg/mL
Buffer:	Antibody is lyophilized in PBS buffer with 2 % sucrose.
Handling Advice:	As with any antibody avoid repeat freeze-thaw cycles.
Storage:	4 °C/-20 °C
Storage Comment:	For short periods of storage (days) store at 4 °C. For longer periods of storage, store SNRPD1 antibody at -20 °C.



Western Blotting

Image 1.