

Datasheet for ABIN2462234
anti-CPSF6 antibody



[Go to Product page](#)

1 Image

Overview

| | |
|--------------|--|
| Quantity: | 100 µL |
| Target: | CPSF6 |
| Reactivity: | Human, Mouse, Rat, Dog |
| Host: | Rabbit |
| Clonality: | Polyclonal |
| Conjugate: | This CPSF6 antibody is un-conjugated |
| Application: | Western Blotting (WB), ELISA, Immunohistochemistry (IHC) |

Product Details

| | |
|---------------|--|
| Immunogen: | Antibody produced in rabbits immunized with a synthetic peptide corresponding a region of human CPSF6. |
| Purification: | Antibody is purified by protein A chromatography method. |

Target Details

| | |
|-------------------|---|
| Target: | CPSF6 |
| Alternative Name: | CPSF6 (CPSF6 Products) |
| Background: | CPSF6 is one subunit of a cleavage factor required for 3' RNA cleavage and polyadenylation processing. The interaction of the protein with the RNA is one of the earliest steps in the assembly of the 3' end processing complex and facilitates the recruitment of other processing factors. The cleavage factor complex is composed of four polypeptides. The protein encoded by this gene is one subunit of a cleavage factor required for 3' RNA cleavage and polyadenylation |

Target Details

processing. The interaction of the protein with the RNA is one of the earliest steps in the assembly of the 3' end processing complex and facilitates the recruitment of other processing factors. The cleavage factor complex is composed of four polypeptides. This gene encodes the 68kD subunit. It has a domain organization reminiscent of spliceosomal proteins.

Molecular Weight: 61 kDa

Gene ID: 11052

NCBI Accession: [NP_008938](#)

UniProt: [Q16630](#)

Application Details

Application Notes: CPSF6 antibody can be used for detection of CPSF6 by ELISA at 1:1562500. CPSF6 antibody can be used for detection of CPSF6 by western blot at 0.3125 µg/mL, and HRP conjugated secondary antibody should be diluted 1:50,000 - 100,000.

Restrictions: For Research Use only

Handling

Format: Lyophilized

Reconstitution: Add 100 µL of distilled water. Final antibody concentration is 1 mg/mL.

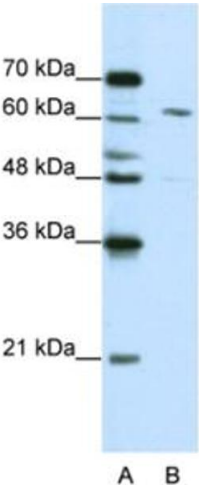
Concentration: 1 mg/mL

Buffer: Antibody is lyophilized in PBS buffer with 2 % sucrose.

Handling Advice: As with any antibody avoid repeat freeze-thaw cycles.

Storage: 4 °C/-20 °C

Storage Comment: For short periods of storage (days) store at 4 °C. For longer periods of storage, store CPSF6 antibody at -20 °C.



Western Blotting

Image 1.