

Datasheet for ABIN2462303
anti-CPSF7 antibody



[Go to Product page](#)

1 Image

Overview

Quantity:	100 µL
Target:	CPSF7
Reactivity:	Human, Mouse, Rat, Dog
Host:	Rabbit
Clonality:	Polyclonal
Conjugate:	This CPSF7 antibody is un-conjugated
Application:	Western Blotting (WB), ELISA, Immunohistochemistry (IHC)

Product Details

Immunogen:	Antibody produced in rabbits immunized with a synthetic peptide corresponding a region of human FLJ12529.
Purification:	Antibody is purified by protein A chromatography method.

Target Details

Target:	CPSF7
Alternative Name:	FLJ12529 (CPSF7 Products)
Background:	The function remains unknown.
Molecular Weight:	52 kDa
Gene ID:	79869
NCBI Accession:	NP_079087

Target Details

UniProt: Q8N684

Application Details

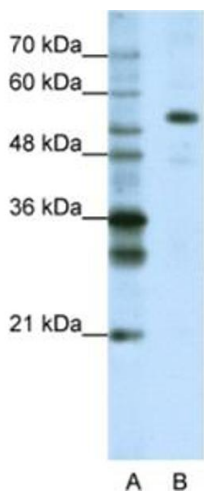
Application Notes: FLJ12529 antibody can be used for detection of FLJ12529 by ELISA at 1:62500. FLJ12529 antibody can be used for detection of FLJ12529 by western blot at 1.25 µg/mL, and HRP conjugated secondary antibody should be diluted 1:50,000 - 100,000.

Restrictions: For Research Use only

Handling

Format:	Lyophilized
Reconstitution:	Add 100 µL of distilled water. Final antibody concentration is 1 mg/mL.
Concentration:	1 mg/mL
Buffer:	Antibody is lyophilized in PBS buffer with 2 % sucrose.
Handling Advice:	As with any antibody avoid repeat freeze-thaw cycles.
Storage:	4 °C/-20 °C
Storage Comment:	For short periods of storage (days) store at 4 °C. For longer periods of storage, store FLJ12529 antibody at -20 °C.

Images



Western Blotting

Image 1.