

Datasheet for ABIN2462325 **anti-RAVER1 antibody**

[Go to Product page](#)

1 Image

Overview

Quantity:	100 µL
Target:	RAVER1
Reactivity:	Human
Host:	Rabbit
Clonality:	Polyclonal
Conjugate:	This RAVER1 antibody is un-conjugated
Application:	Western Blotting (WB), ELISA, Immunohistochemistry (IHC)

Product Details

Immunogen:	Antibody produced in rabbits immunized with a synthetic peptide corresponding a region of human RAVER1.
Purification:	Antibody is purified by protein A chromatography method.

Target Details

Target:	RAVER1
Alternative Name:	RAVER1 (RAVER1 Products)
Background:	RAVER1 contains 3 RRM (RNA recognition motif) domains. It cooperates with PTBP1 to modulate regulated alternative splicing events and promotes exon skipping. It cooperates with PTBP1 to modulate switching between mutually exclusive exons during maturation of the TPM1 pre-mRNA.
Molecular Weight:	67 kDa

Target Details

Gene ID:	125950
NCBI Accession:	NP_597709
UniProt:	Q8IY67

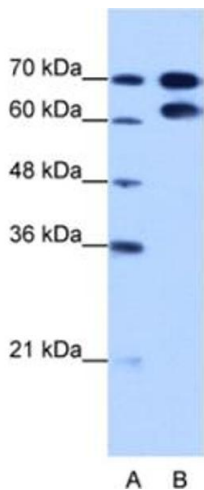
Application Details

Application Notes:	RAVER1 antibody can be used for detection of RAVR1 by ELISA at 1:312500. RAVR1 antibody can be used for detection of RAVR1 by western blot at 1.25 µg/mL, and HRP conjugated secondary antibody should be diluted 1:50,000 - 100,000.
Restrictions:	For Research Use only

Handling

Format:	Lyophilized
Reconstitution:	Add 100 µL of distilled water. Final antibody concentration is 1 mg/mL.
Concentration:	1 mg/mL
Buffer:	Antibody is lyophilized in PBS buffer with 2 % sucrose.
Handling Advice:	As with any antibody avoid repeat freeze-thaw cycles.
Storage:	4 °C/-20 °C
Storage Comment:	For short periods of storage (days) store at 4 °C. For longer periods of storage, store RAVR1 antibody at -20 °C.

Images



Western Blotting

Image 1.