



[Go to Product page](#)

Datasheet for ABIN2462346

## anti-DRB1 antibody

### 1 Image

#### Overview

Quantity:	100 µL
Target:	DRB1
Reactivity:	Dog, Human, Mouse, Rat
Host:	Rabbit
Clonality:	Polyclonal
Conjugate:	This DRB1 antibody is un-conjugated
Application:	Western Blotting (WB), ELISA

#### Product Details

Immunogen:	Antibody produced in rabbits immunized with a synthetic peptide corresponding a region of human DRB1.
Purification:	Antibody is purified by protein A chromatography method.

#### Target Details

Target:	DRB1
Alternative Name:	DRB1 ( <a href="#">DRB1 Products</a> )
Background:	DRB1 is RNA-binding protein with binding specificity for poly (C) and may play an important role in neural development.
Molecular Weight:	36 kDa
Gene ID:	129831

## Target Details

NCBI Accession: [NP\\_694453](#)

Pathways: [TCR Signaling, Positive Regulation of Peptide Hormone Secretion, Production of Molecular Mediator of Immune Response, CXCR4-mediated Signaling Events](#)

## Application Details

Application Notes: DRB1 antibody can be used for detection of DRB1 by ELISA at 1:312500. DRB1 antibody can be used for detection of DRB1 by western blot at 1.25 µg/mL, and HRP conjugated secondary antibody should be diluted 1:50,000 - 100,000.

Restrictions: For Research Use only

## Handling

Format: Lyophilized

Reconstitution: Add 100 µL of distilled water. Final antibody concentration is 1 mg/mL.

Concentration: 1 mg/mL

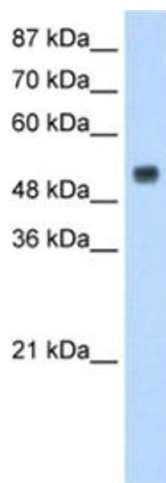
Buffer: Antibody is lyophilized in PBS buffer with 2 % sucrose.

Handling Advice: As with any antibody avoid repeat freeze-thaw cycles.

Storage: 4 °C/-20 °C

Storage Comment: For short periods of storage (days) store at 4 °C. For longer periods of storage, store DRB1 antibody at -20 °C.

## Images



### Western Blotting

Image 1.