

Datasheet for ABIN2462350
anti-SEPSECS antibody



[Go to Product page](#)

1 Image

Overview

Quantity:	100 µL
Target:	SEPSECS
Reactivity:	Human, Mouse, Rat, Dog
Host:	Rabbit
Clonality:	Polyclonal
Conjugate:	This SEPSECS antibody is un-conjugated
Application:	Western Blotting (WB), ELISA, Immunohistochemistry (IHC)

Product Details

Immunogen:	Antibody produced in rabbits immunized with a synthetic peptide corresponding a region of human SLA/LP.
Purification:	Antibody is purified by peptide affinity chromatography method.

Target Details

Target:	SEPSECS
Alternative Name:	SLA/LP (SEPSECS Products)
Target Type:	Antibody
Background:	SLA/LP converts O-phosphoseryl-tRNA (Sec) to selenocysteinyl-tRNA (Sec) required for selenoprotein biosynthesis.
Molecular Weight:	49 kDa

Target Details

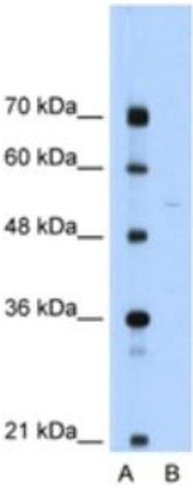
Gene ID:	51091
NCBI Accession:	NP_722547
UniProt:	A1A4F3
Pathways:	SARS-CoV-2 Protein Interactome

Application Details

Application Notes:	SLA/LP antibody can be used for detection of SLA/LP by ELISA at 1:312500. SLA/LP antibody can be used for detection of SLA/LP by western blot at 1.0 µg/mL, and HRP conjugated secondary antibody should be diluted 1:50,000 - 100,000.
Restrictions:	For Research Use only

Handling

Format:	Lyophilized
Reconstitution:	Add 50 µL of distilled water. Final antibody concentration is 1 mg/mL.
Concentration:	1 mg/mL
Buffer:	Antibody is lyophilized in PBS buffer with 2 % sucrose.
Handling Advice:	As with any antibody avoid repeat freeze-thaw cycles.
Storage:	4 °C/-20 °C
Storage Comment:	For short periods of storage (days) store at 4 °C. For longer periods of storage, store SLA/LP antibody at -20 °C.



Western Blotting

Image 1.